



# CAAC Design and Construction Update

3-17-2022



# 2022 Projects

## New Buildings & Additions

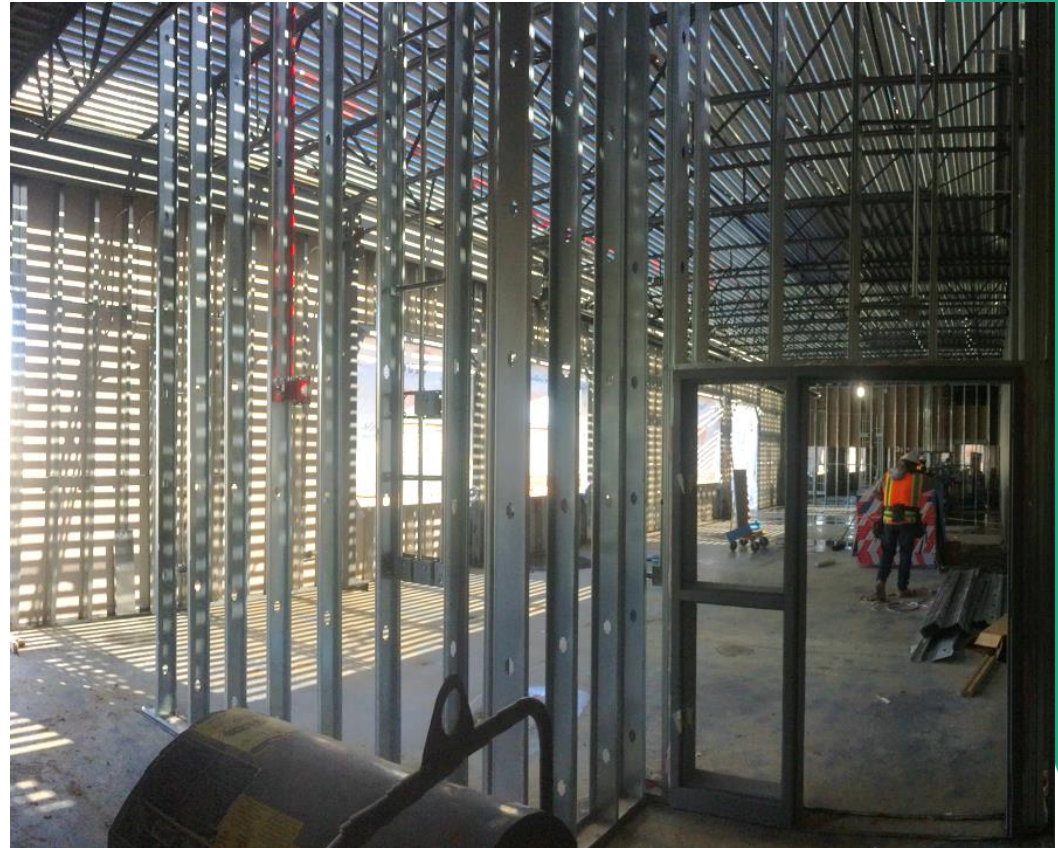
# Marshdale ES - Replacement HCM – GC GH Phipps

Construction



# D'Evelyn – 8 CR Addition HCM – GC Himmelman

Construction



# Powderhorn ES - Addition Hollis & Miller – Himmelman

Construction



# Prospect Valley ES - Replacement MOA – GH Phipps

Construction



# Evergreen MS Efficiency & Future Ready Construction

## AMD – Haselden



Evergreen HS  
Efficiency Future Ready  
DLR – CMGC JHL

Construction





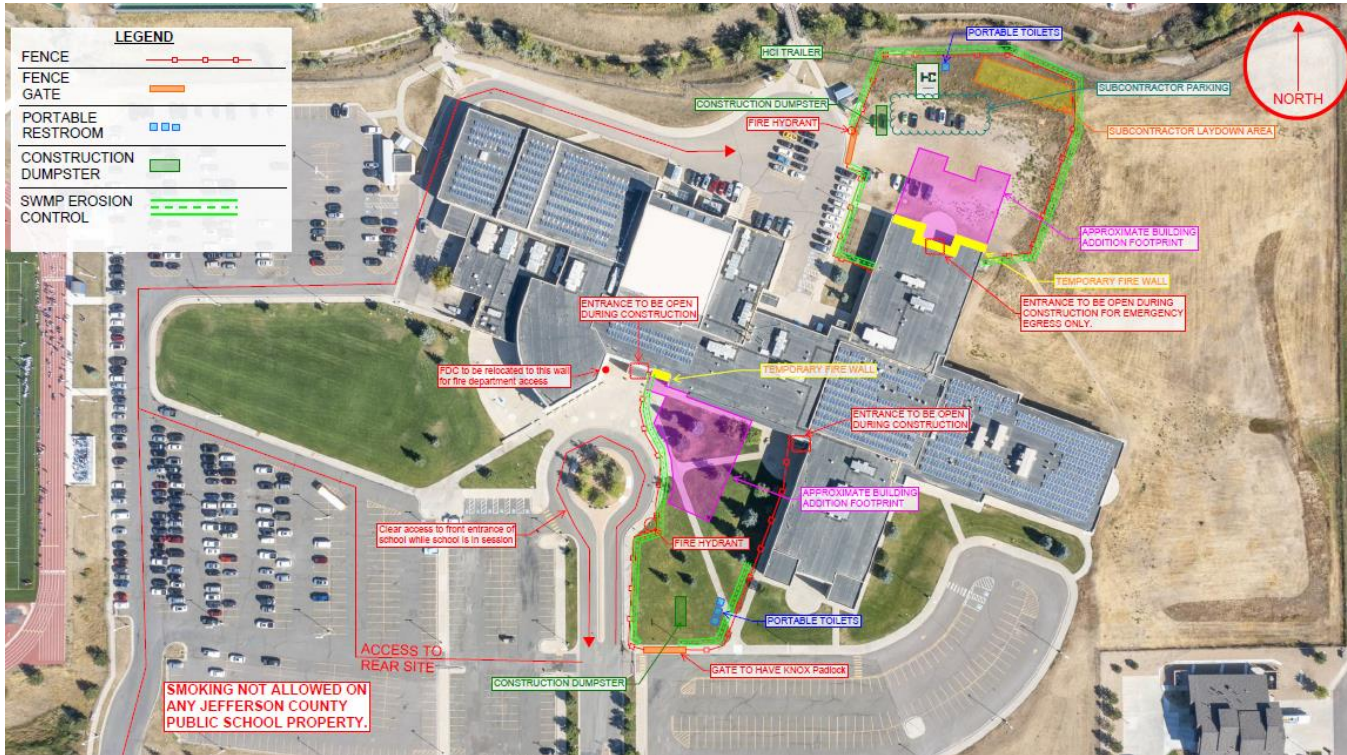
# Jeffco Open - Addition HCM - Bassett

Construction



# Ralston Valley HS - Addition EUA - Himmelman

Construction



# Standley Lake HS - Addition Cannon – FCI Constructors

Construction



STANDLEY LAKE HIGH SCHOOL

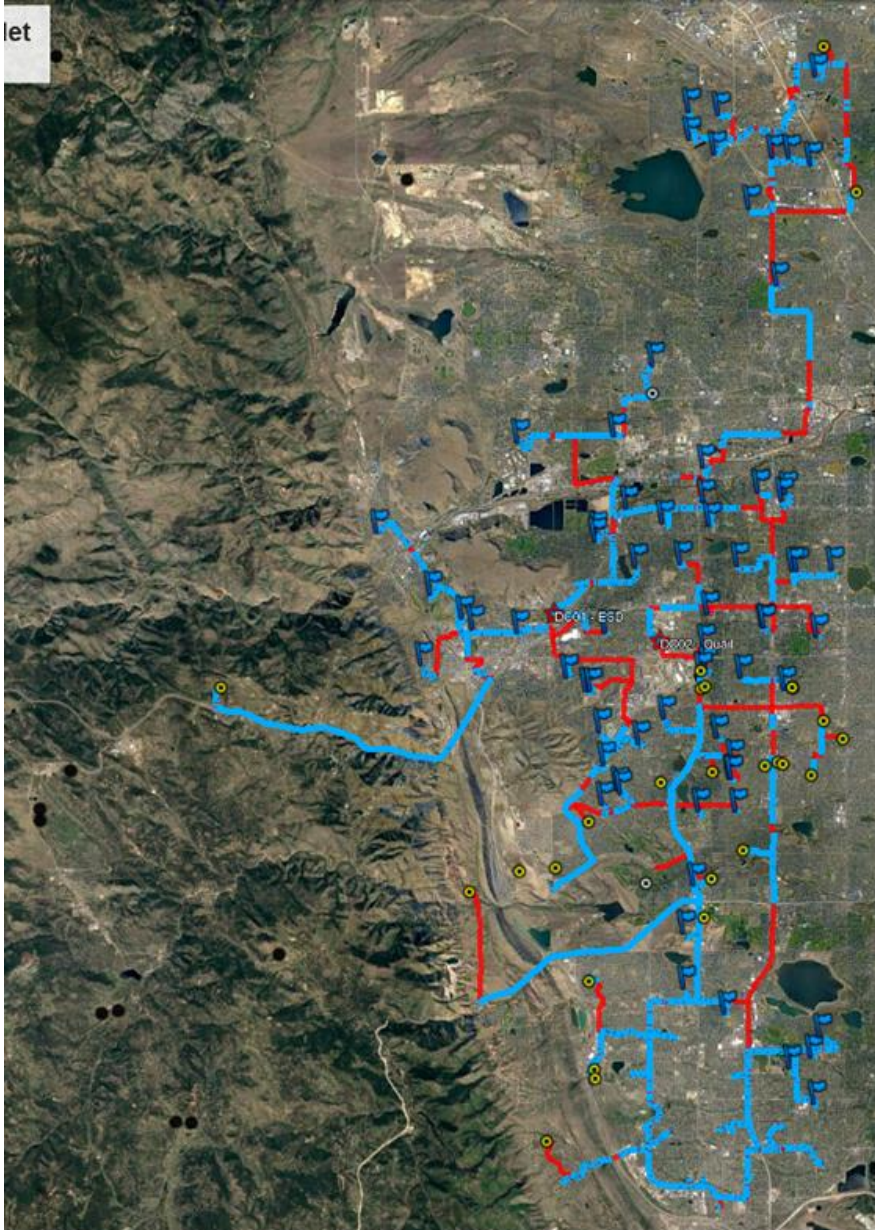


SECURE ENTRY &  
AUXILIARY GYMNASIUM ADDITION



# JeffcoNET Henkels & McCoy - Design Build

Construction



## Project Information

Project Start – April 29, 2020

Total Miles of conduit to be bored – 119

Miles installed – 68 (57%)

Fiber placed at 98 schools (MDF to Street)  
Complete remainder in April

9 crews working primarily on the North Ring

# 2022

# 43 - Efficiency

# Future Ready

# &

# DW projects

DW – Roofing  
Pennington ES  
Roof Tech – Grabau

Construction



DW – Roofing -  
Campbell ES (Grabau), Fairmount ES (FR) ,  
S Lakewood ES (DC), Summit Ridge MS (UM), &  
Pennington ES (Grabau)  
SR+DK

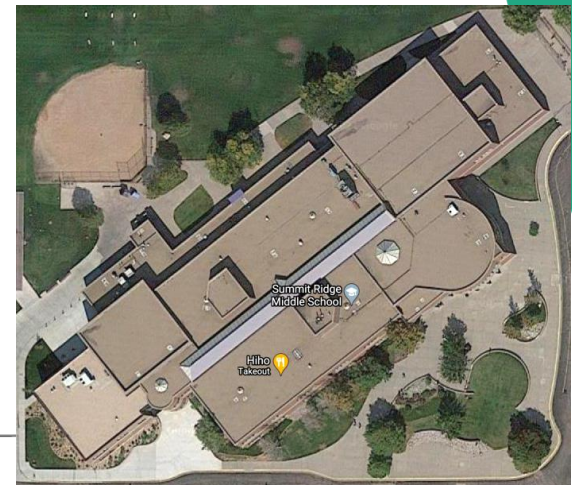


Fairmount

S Lakewood



Campbell

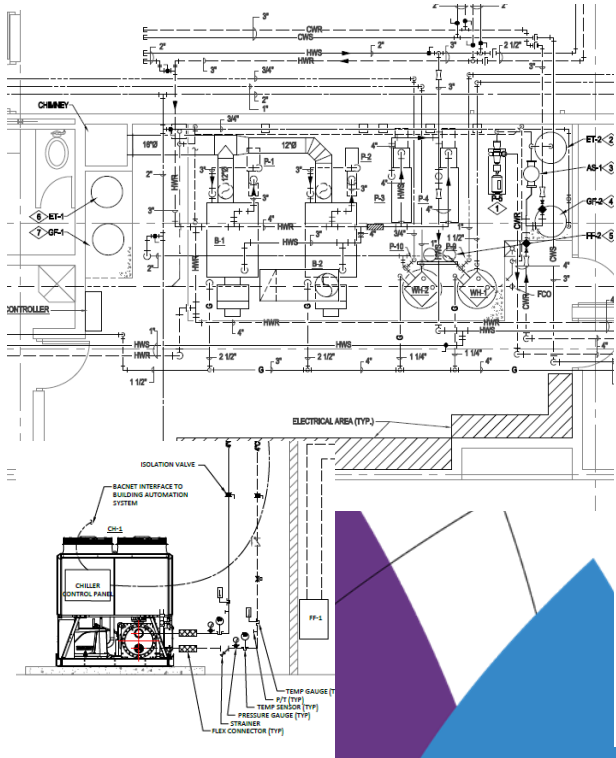


Summit Ridge BOE 2/3/22

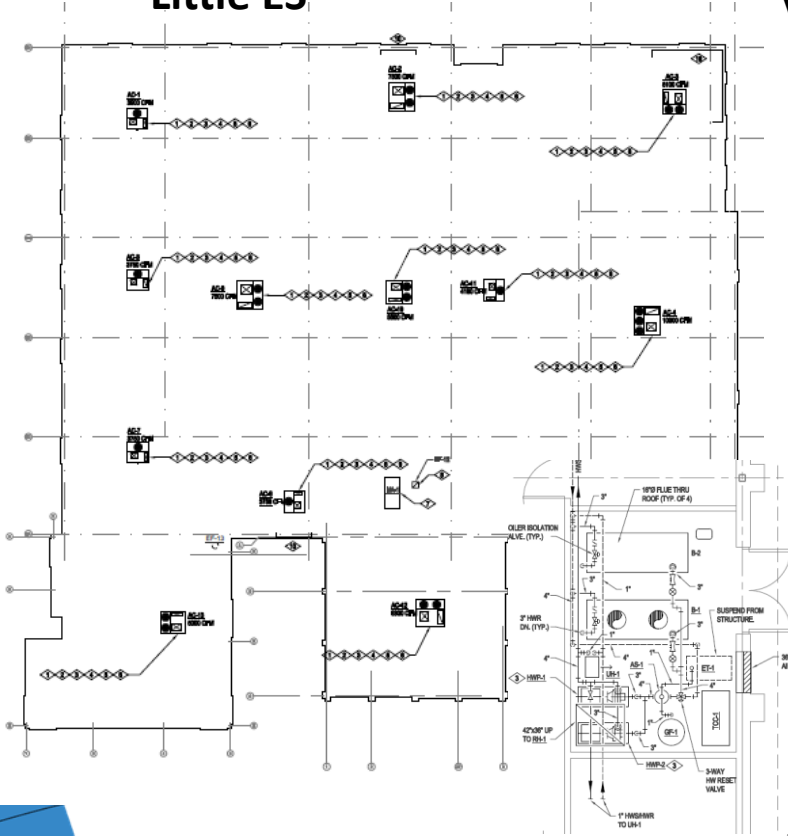
# DW Mechanical 2022 Campbell ES, Little ES & Van Arsdale ES

## Columbine Engineering – US Engineering

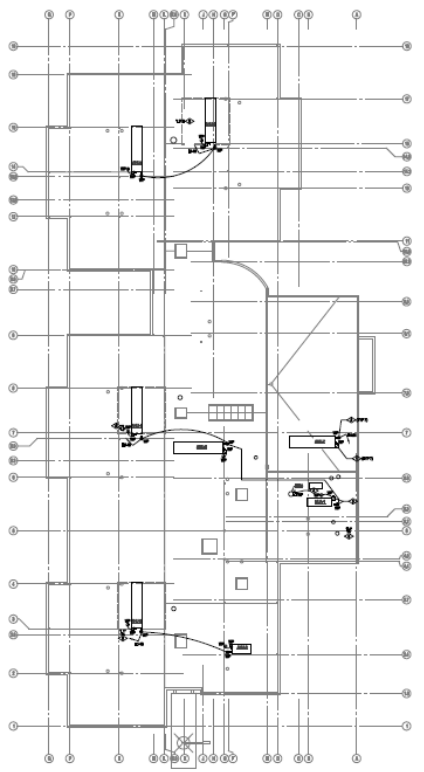
Campbell ES



Little ES



Van Arsdale ES

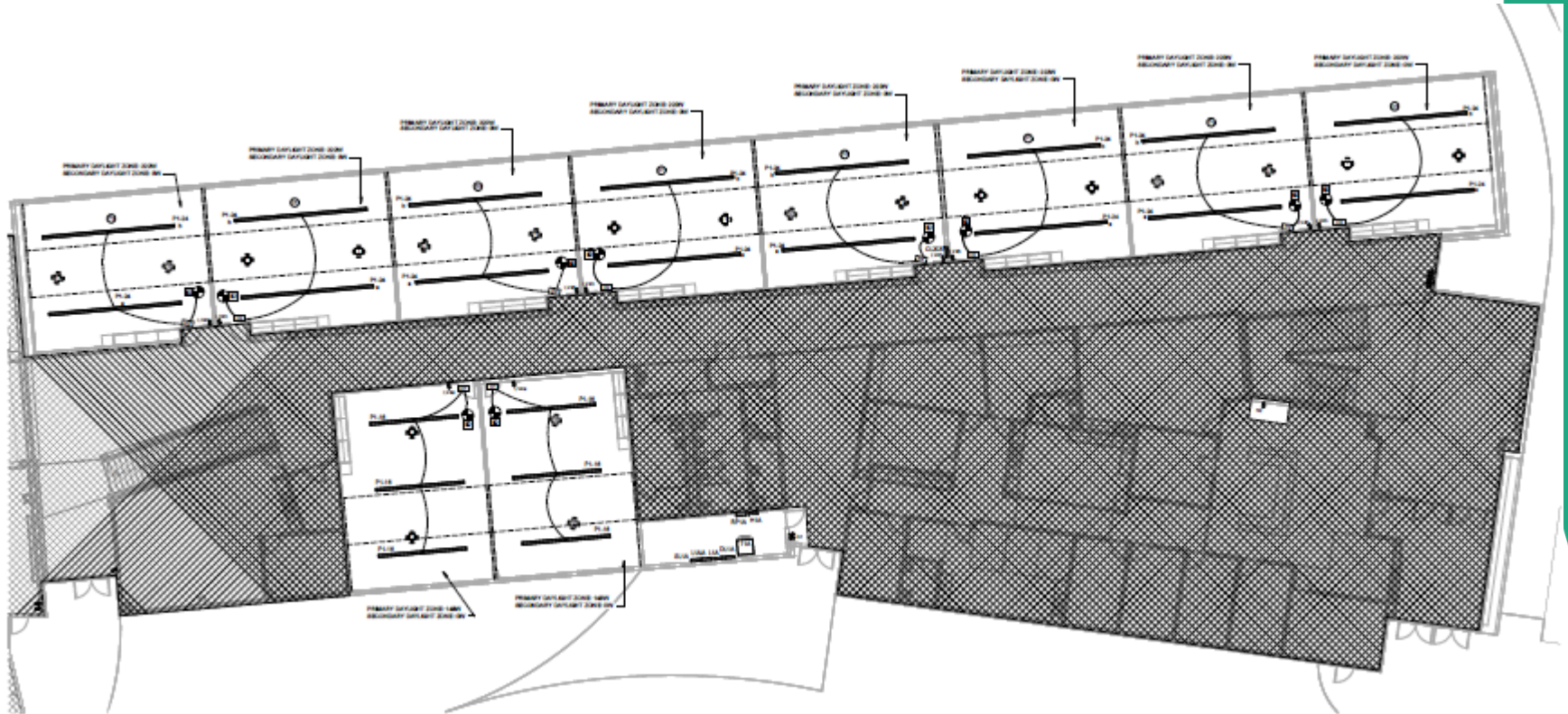




# Efficiency Future Ready Golden HS

Construction

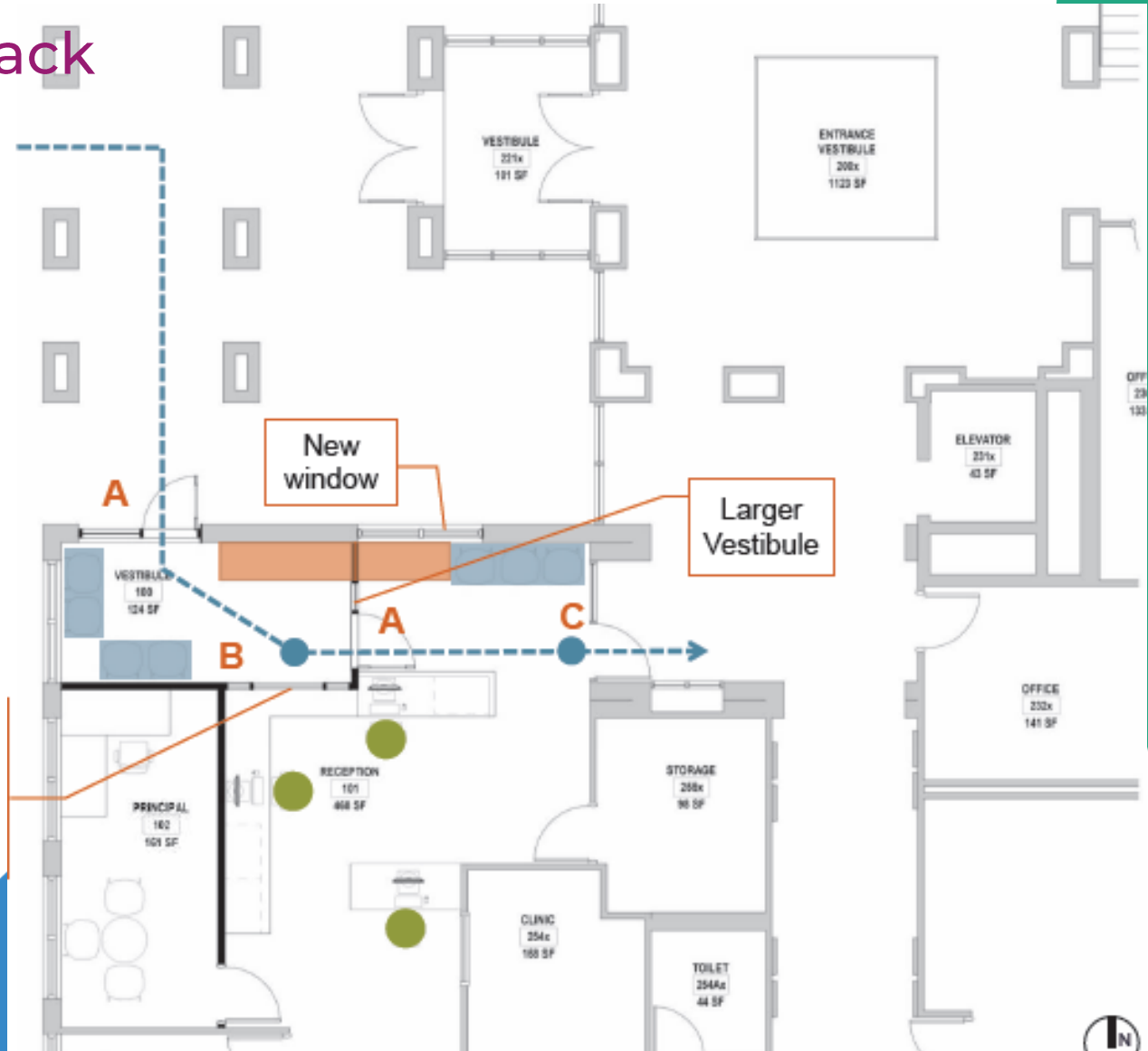
## H&M – Singletrack



# Efficiency Future Ready Mitchell ES

Construction

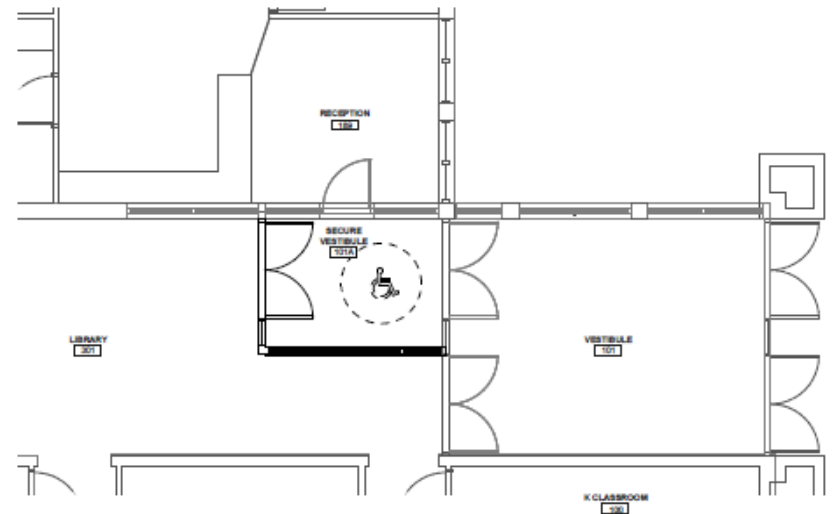
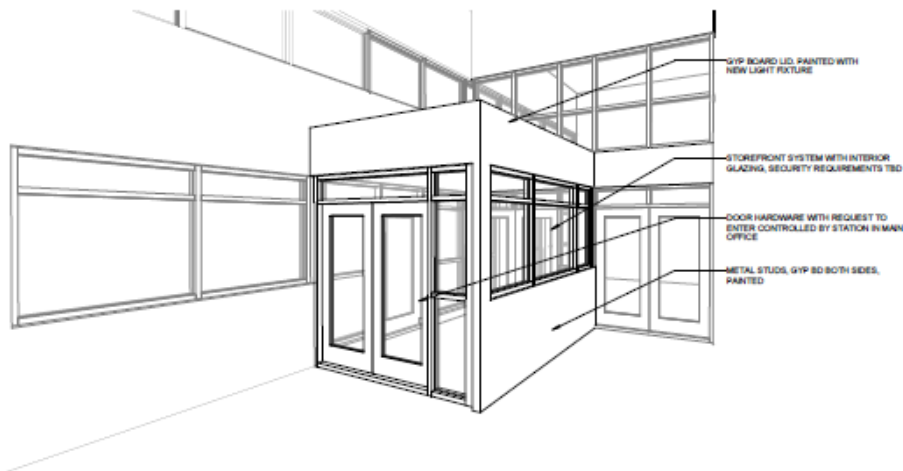
## H&M – Singletrack



# Efficiency Future Ready Elk Creek ES

Construction

## BVH – SCS



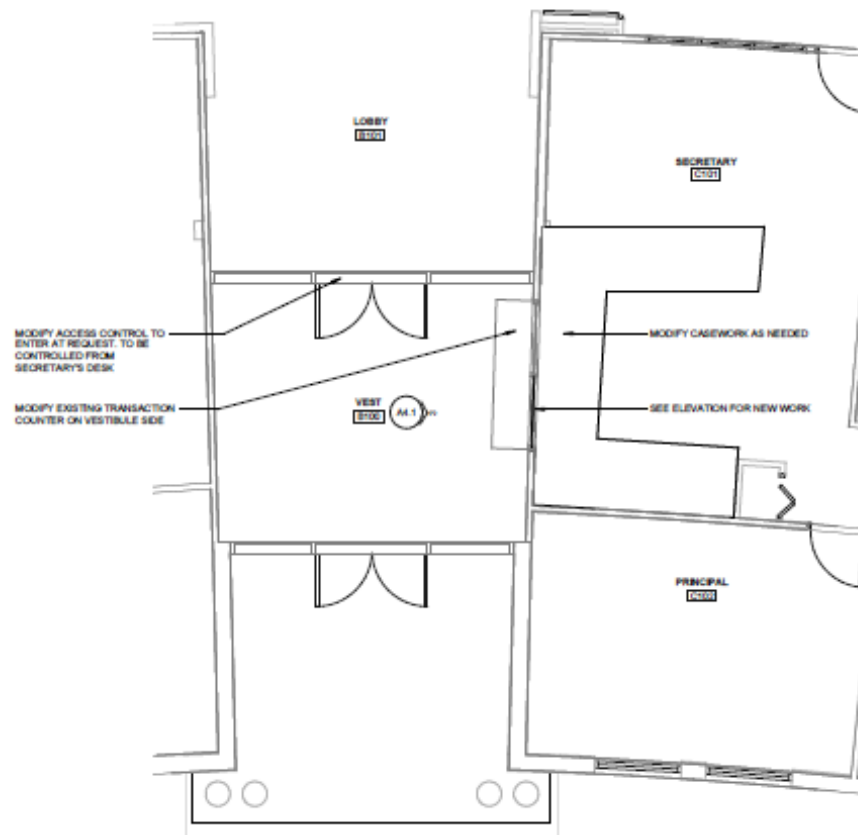
3 VESTIBULE PERSPECTIVE - FOR REFERENCE ONLY

1 ENLARGED VESTIBULE PLAN  
1/4" = 1'-0"

# Efficiency Future Ready West Jefferson ES

Construction

## BVH – Bryan

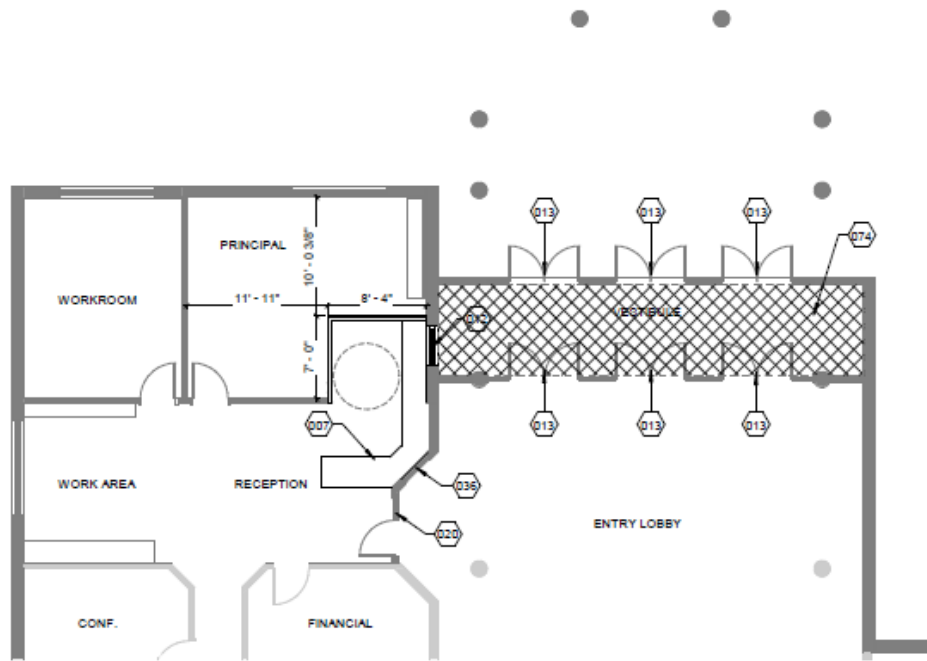



1 ENLARGED VESTIBULE PLAN  
1/4" = 1'-0"

# Efficiency Future Ready Emory ES

Construction

## Treanor HL- Crossland



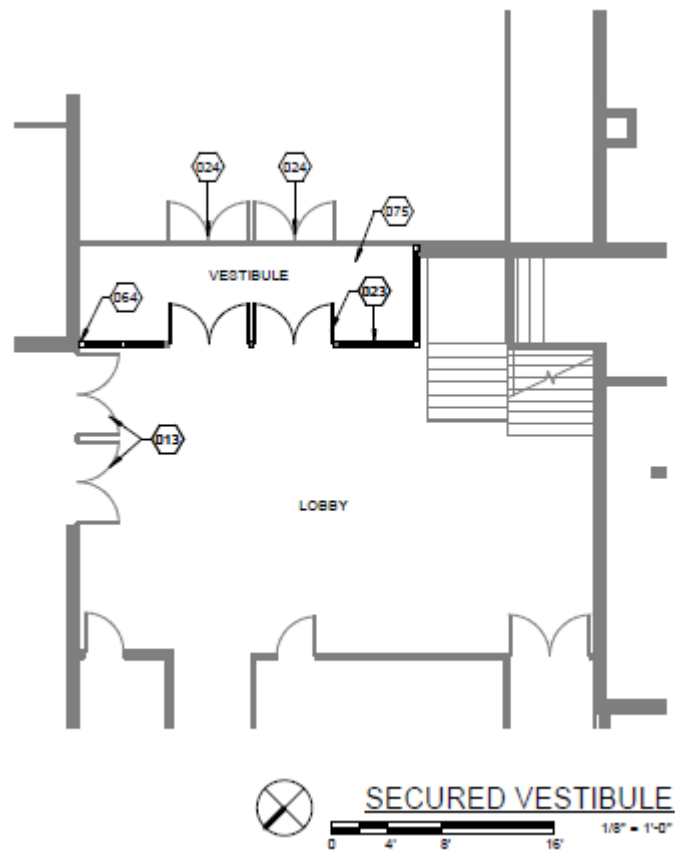
 SECURED VESTIBULE  
0 4' 8' 16' 1/8" = 1'-0"

1

# Efficiency Future Ready Red Rocks ES

Construction

## Treanor HL- Crossland

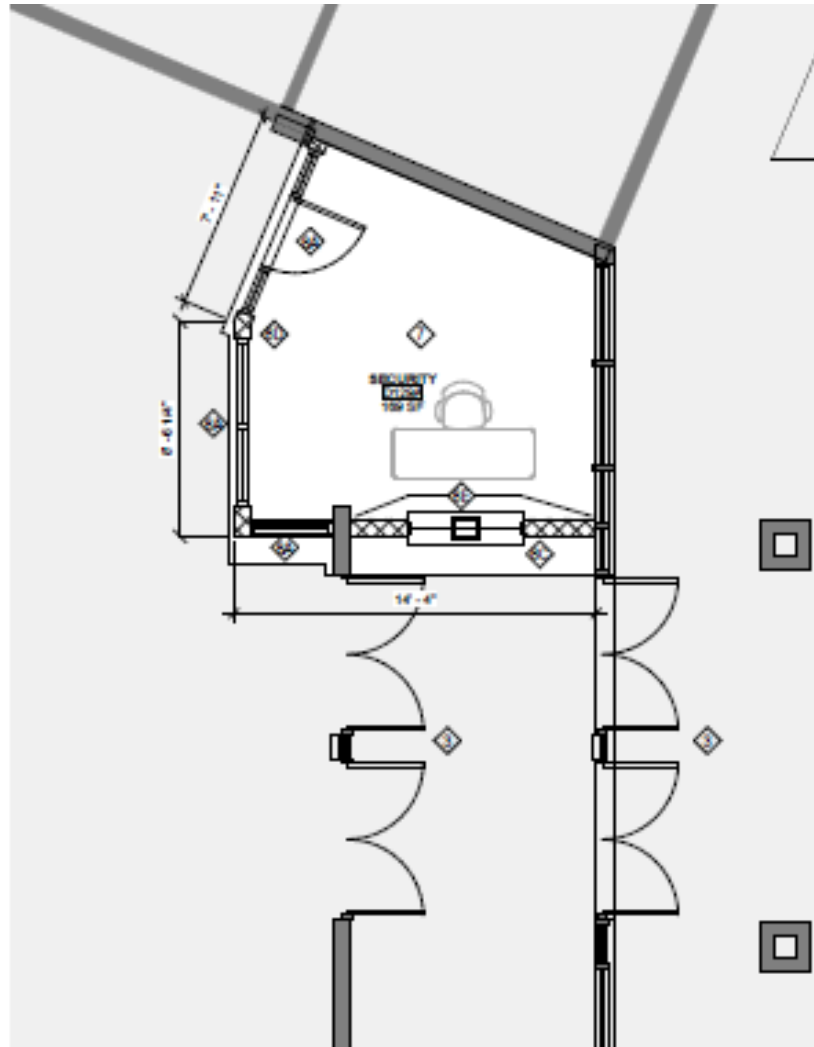


2

# Efficiency Future Ready Lakewood HS

Construction

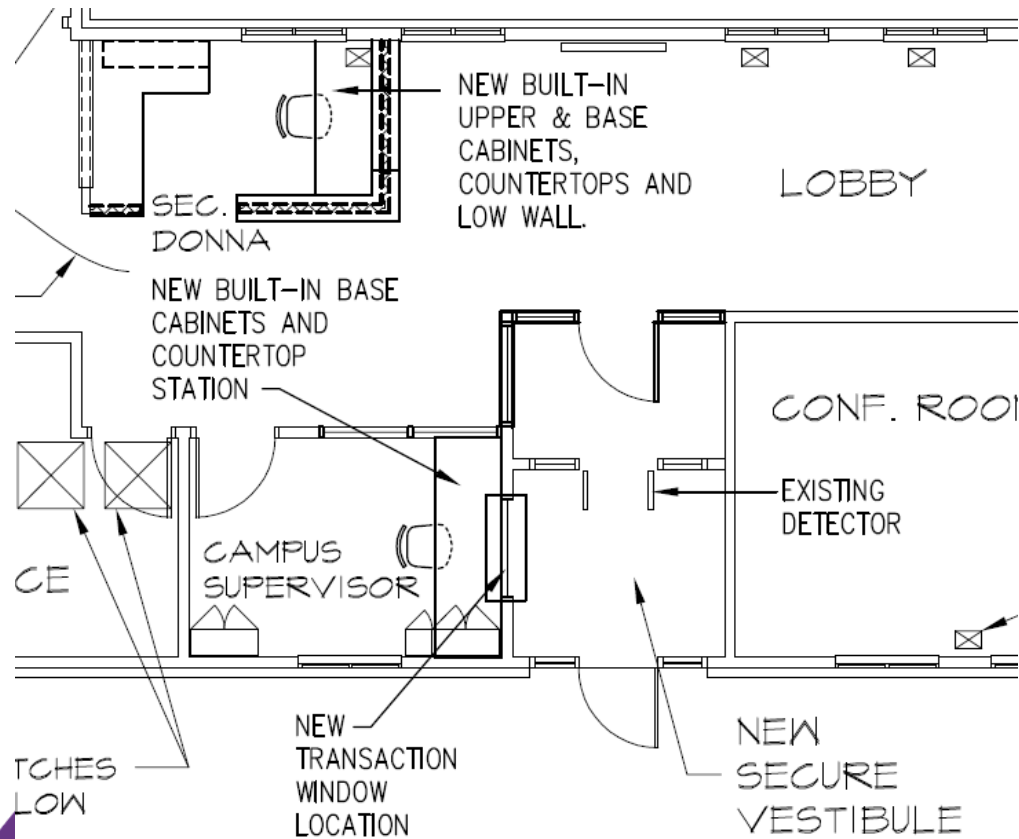
HCM – AD Miller



# Efficiency Future Ready Longview HS

Construction

## Mellin & Associates – Singletrack

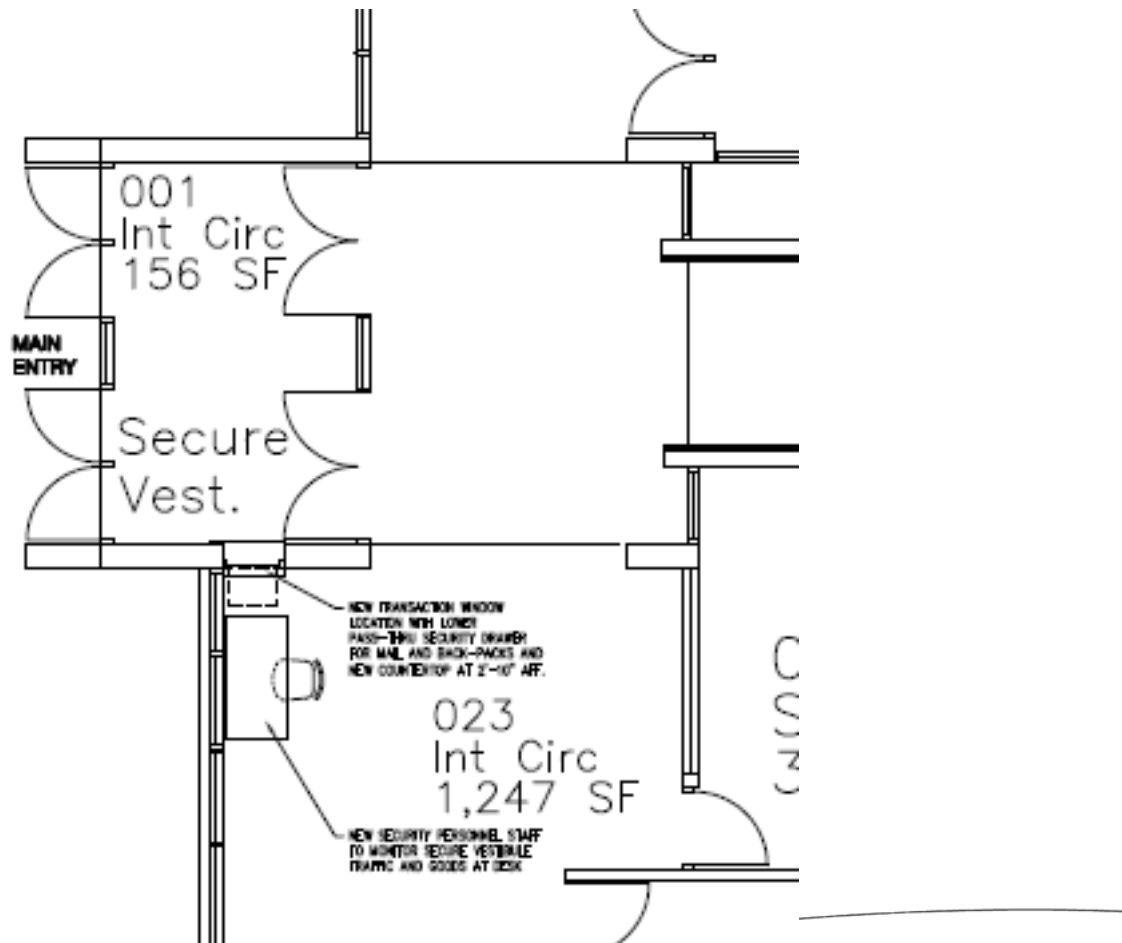




# Efficiency Future Ready Shelton ES

Construction

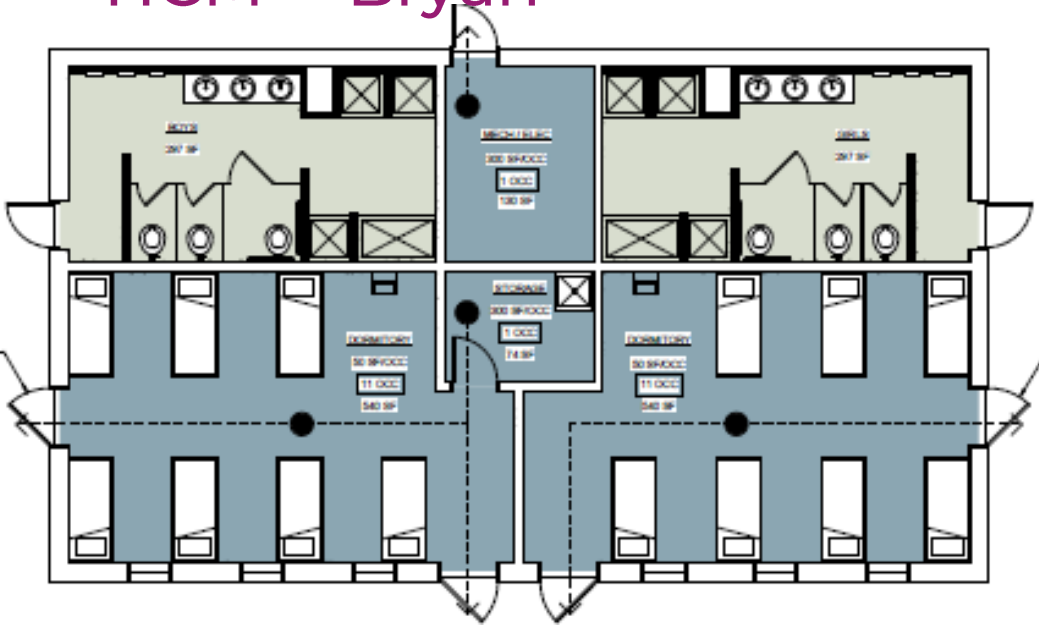
Mellin & Associates – Himmelman



# Efficiency Future Ready Windy Peak OEL

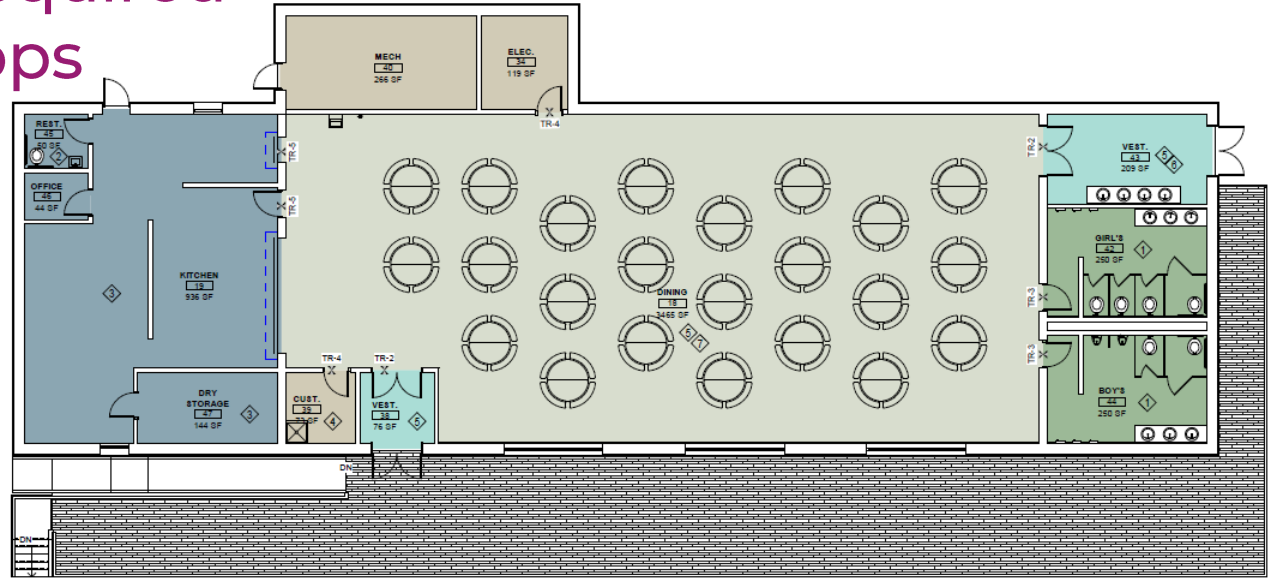
Construction

## HCM – Bryan



Efficiency Future Ready  
Mount Evans OEL  
CAAC - Vote Required  
HCM – GH Phipps

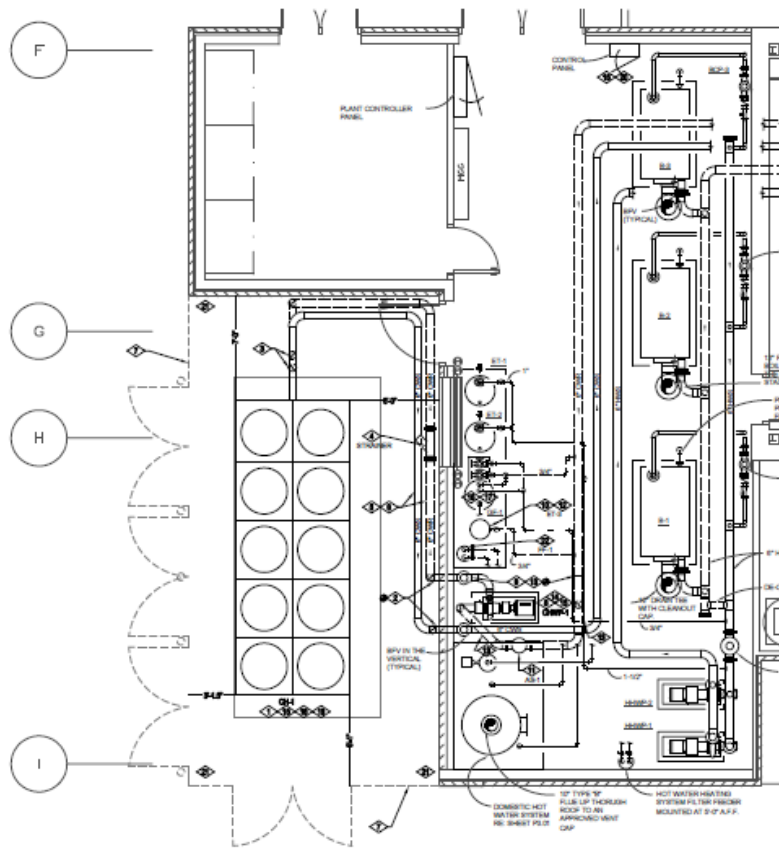
Construction



# Efficiency Future Ready North Arvada MS

Construction

## Columbine Engineering – JCOR



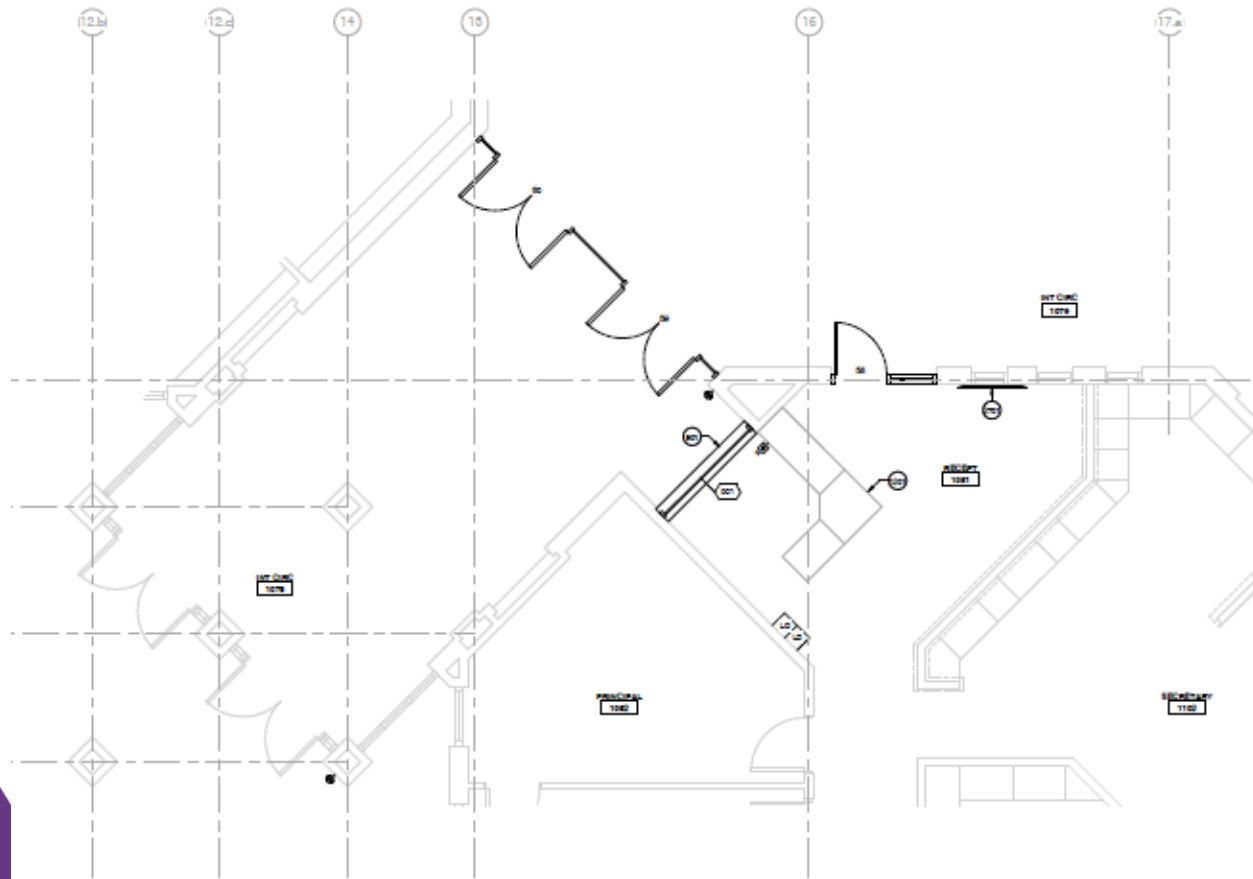
ENLARGED MECHANICAL ROOM NEW WORK PLAN

SCALE: 1/4" = 1'-0"

# Efficiency Future Ready Stevens ES

Construction

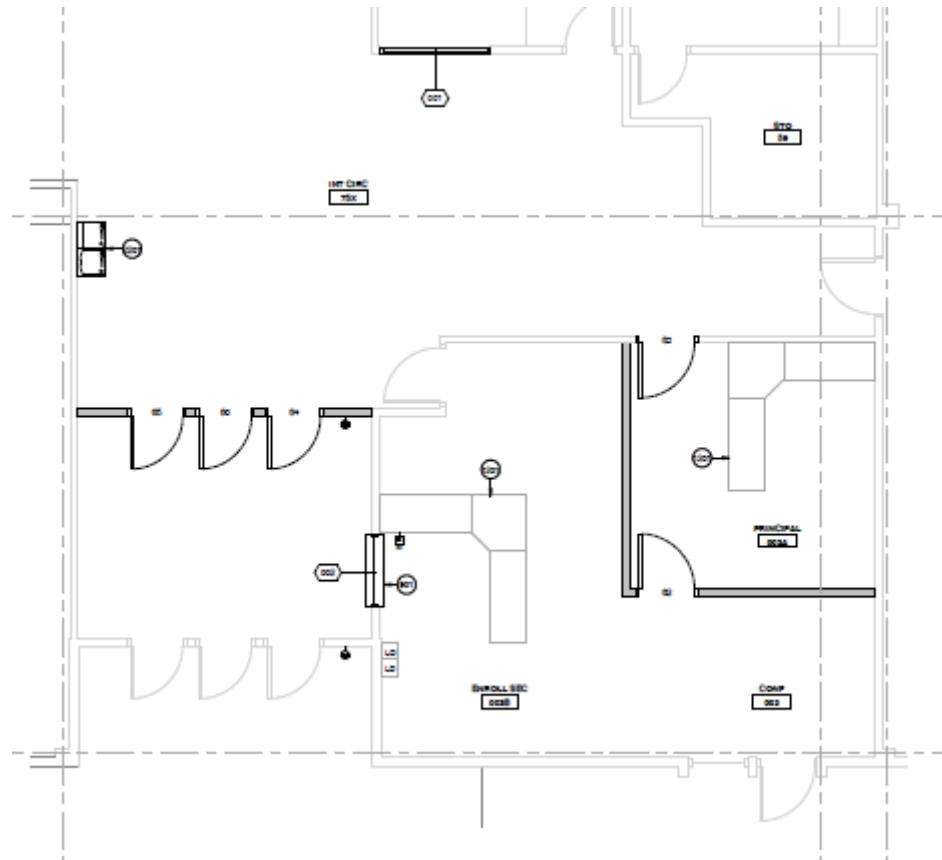
## AMD – PG Arnold



# Efficiency Future Ready Thomson ES

Construction

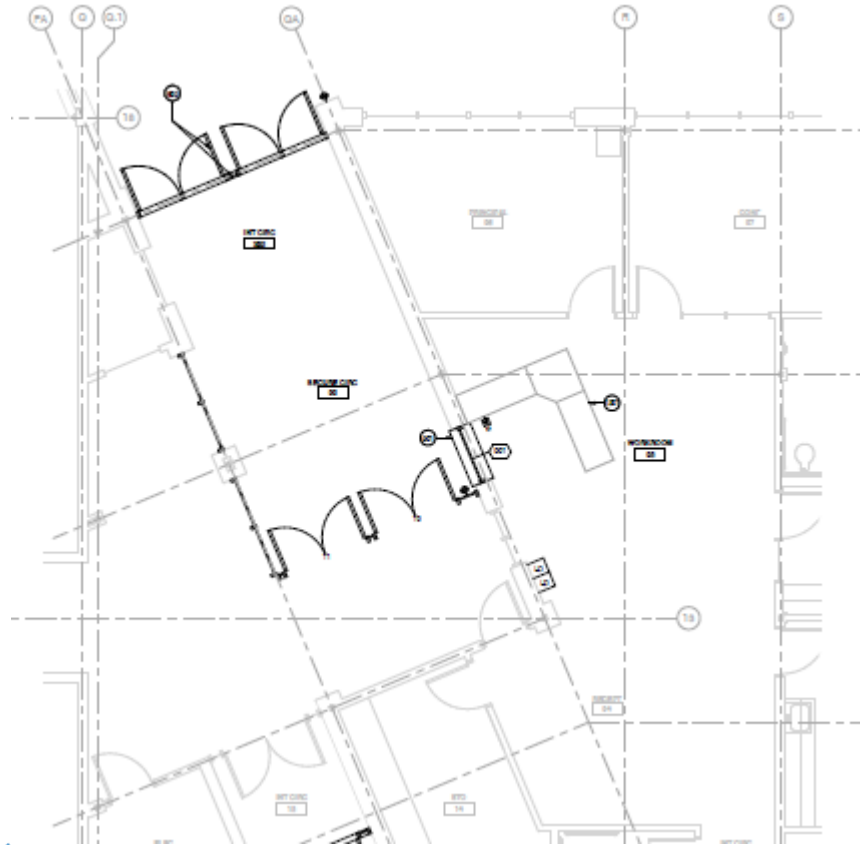
## AMD – Bryan



# Efficiency Future Ready Green Mountain ES

Construction

## AMD – PG Arnold

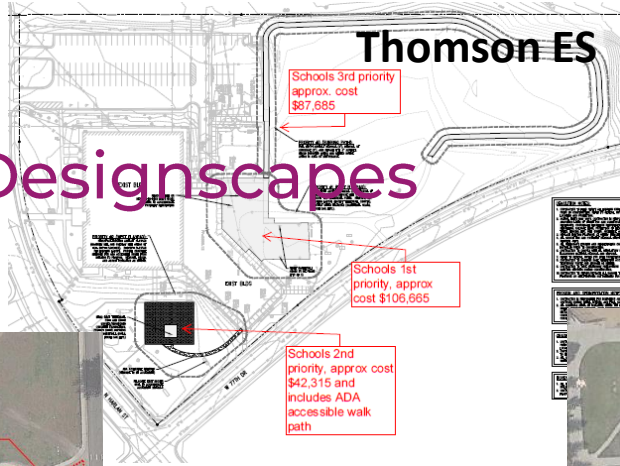


# Re-Bid

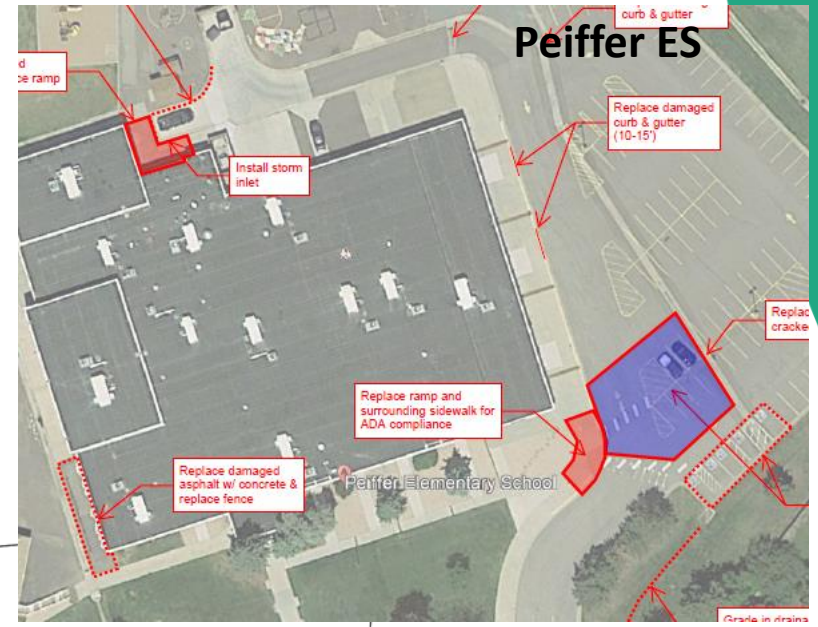
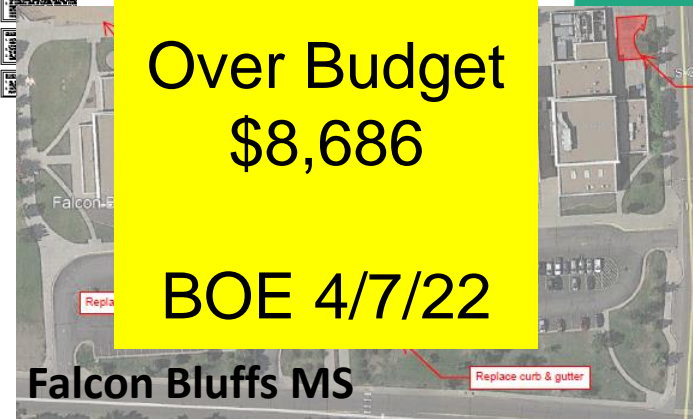
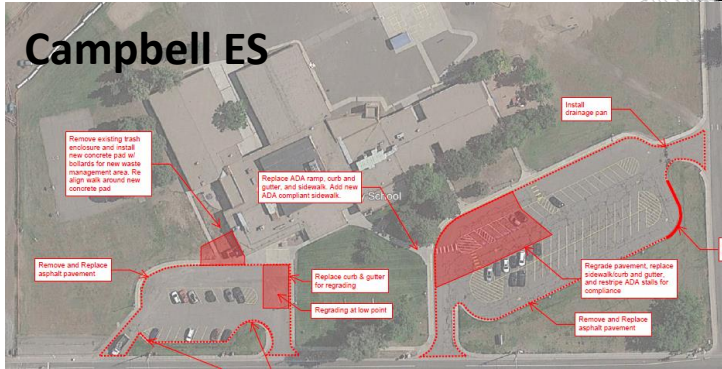
|             |           |       |                                    |
|-------------|-----------|-------|------------------------------------|
| Mortensen   | \$408,323 | ReBid | No Bid<br>NO HVAC Sub<br>Numbers   |
| Shaffer     | \$326,105 | ReBid | No Bid<br>NO HVAC Sub<br>Numbers   |
| Blue Heron  | \$384,562 | ReBid | \$ 1,503,686.00<br>1 Bidder        |
| Ute Meadows | \$607,477 | ReBid | \$ 1,869,739.00<br>1 Bidder        |
| Mandalay    | \$680,932 | ReBid | \$ 1,308,400.00<br>High Electrical |



# DW Paving 2022 JVA – Colorado Designscapes

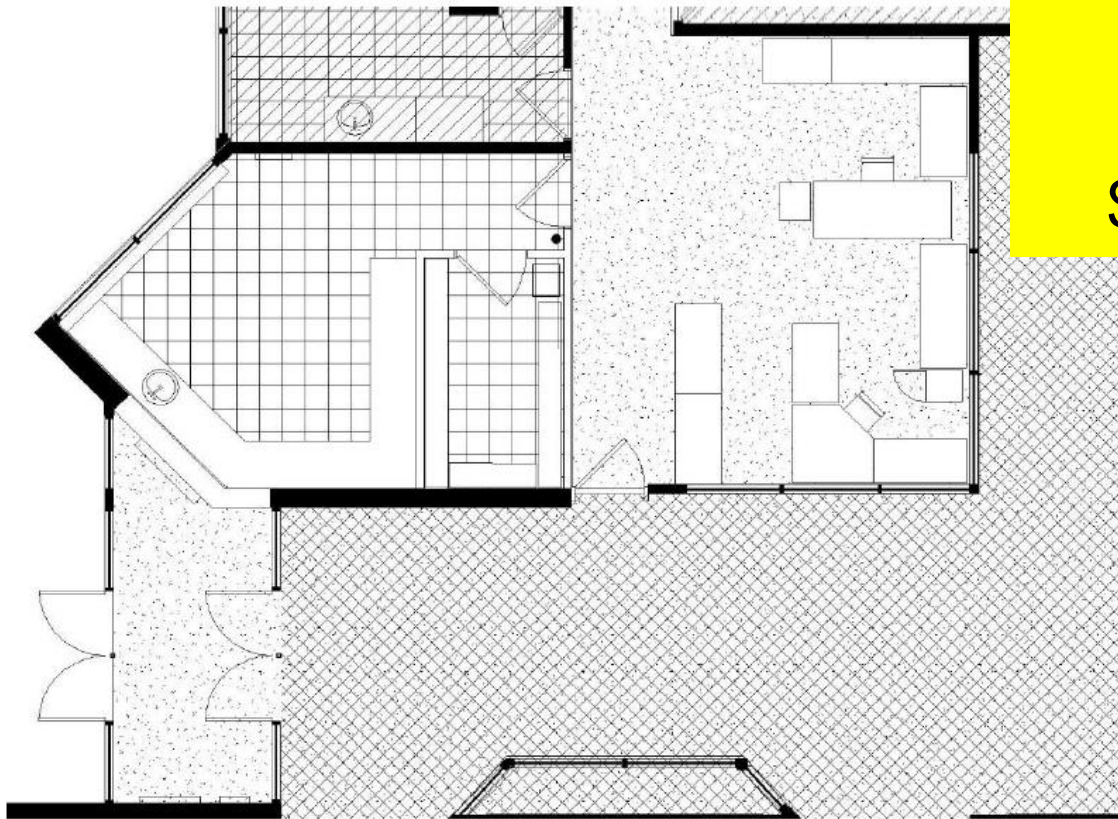


**Construction  
Bid \$897,000  
Over Budget  
\$8,686  
BOE 4/7/22**



# Efficiency Future Ready Stony Creek ES

Jordin – Calahan



Construction

Bid \$425,786

Under  
Budget

\$77,214

# Efficiency Future Ready Bear Creek HS

MOA – Crossland

Construction

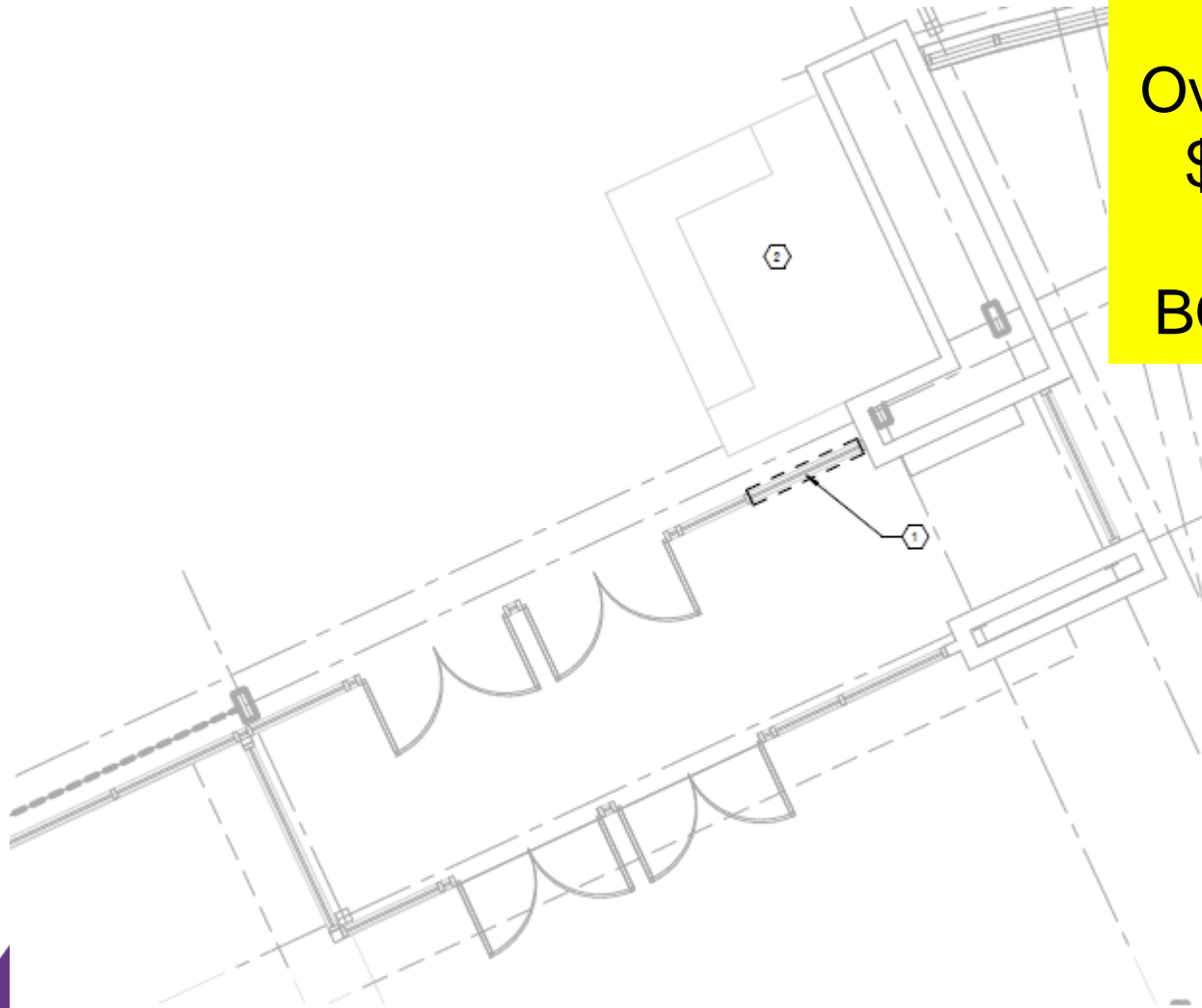
Bid

\$1,000,437

Over Budget

\$123,671

BOE 4/7/22



# Efficiency Future Ready Warder ES

RB+B – Golden Triangle

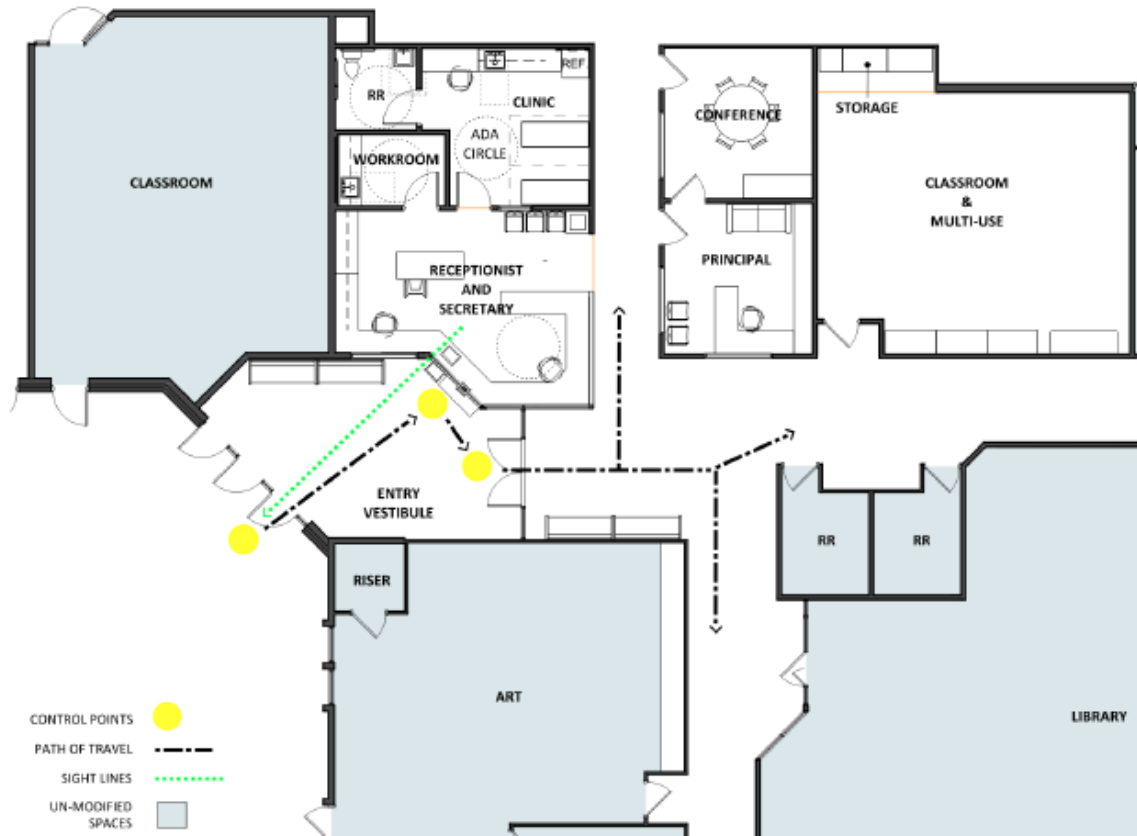
Construction

Bid \$886,400

Over Budget  
\$587,486

Secure entry  
\$382,700

BOE 4/7/22



VOTE



# Efficiency Future Ready Warren Tech North

## LOA – Golden Triangle

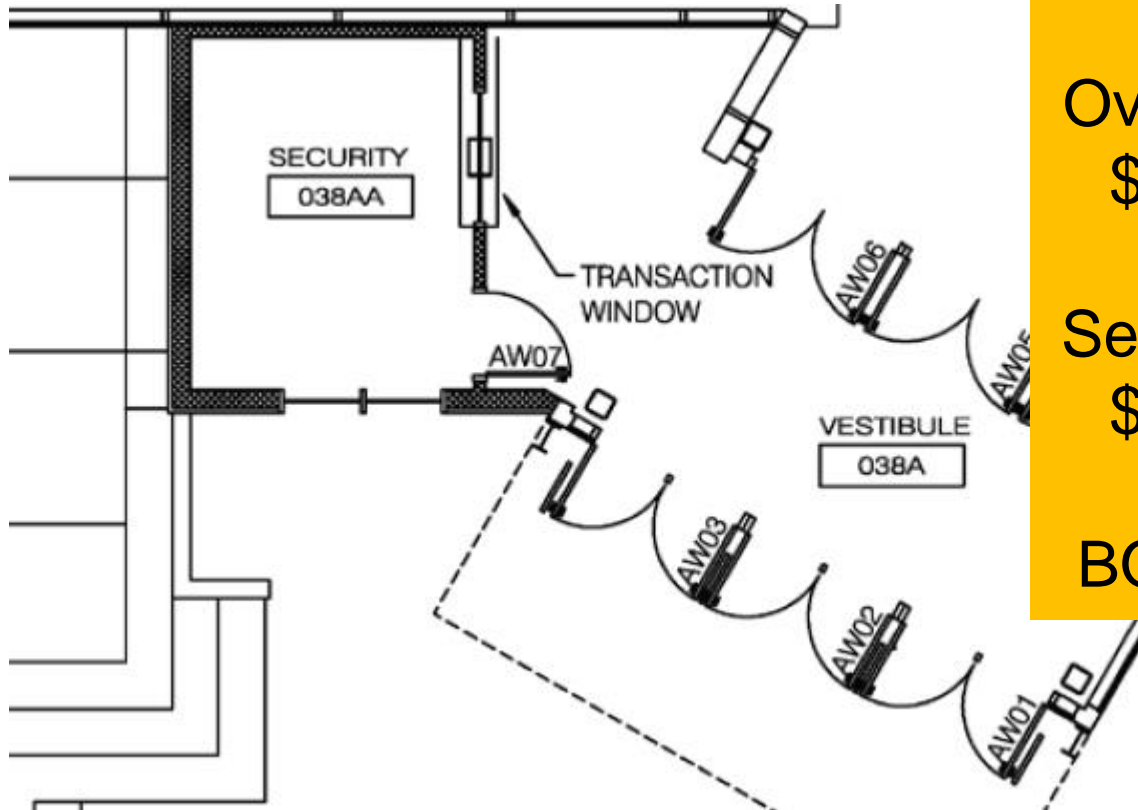


Construction  
Bid \$923,400  
Over Budget  
\$604,450  
Secure entry  
\$291,700  
BOE 4/7/22

VOTE

# Efficiency Future Ready Arvada West HS

## LOA – Golden Triangle



Construction  
Bid  
\$1,360,900  
Over Budget  
\$562,083  
Secure entry  
\$391,200  
BOE 4/7/22

VOTE

# Efficiency Future Ready Colorow ES

MOA – Crossland

Construction

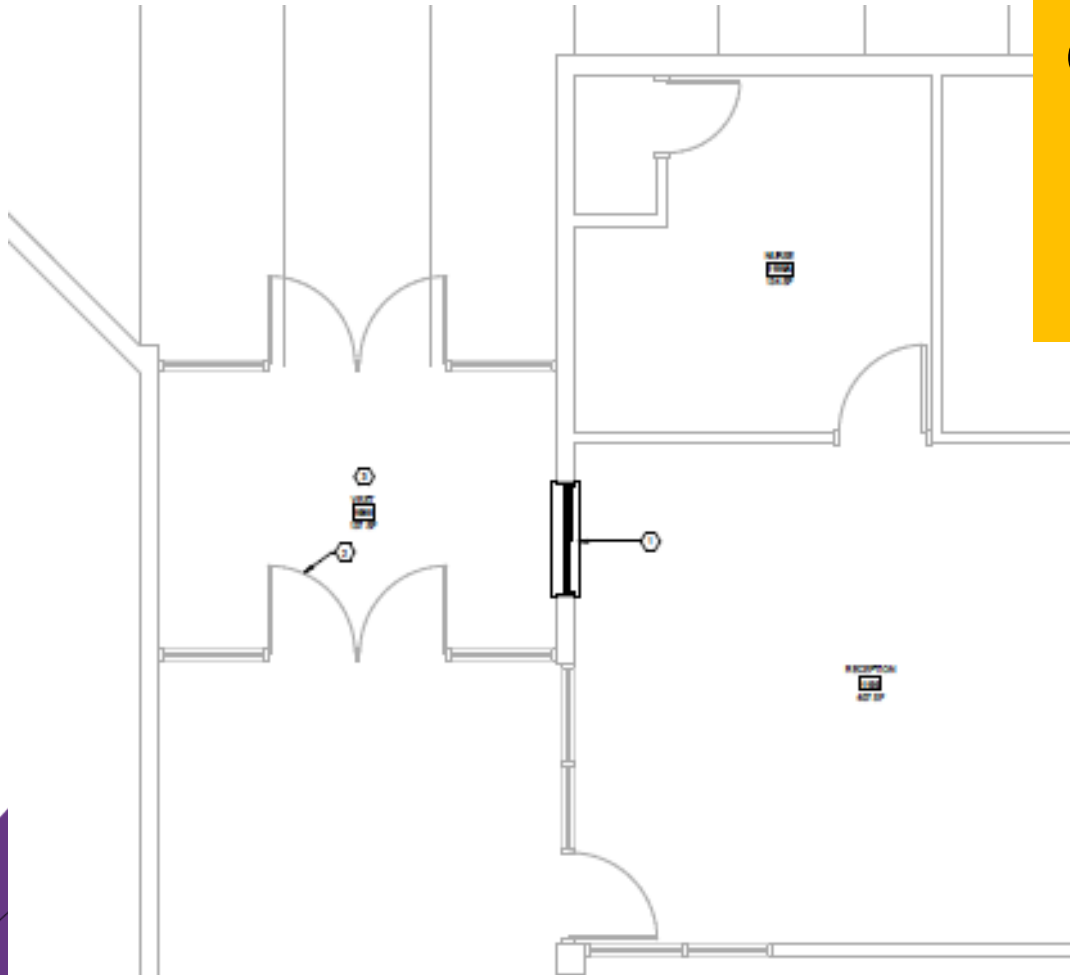
Bid

\$1,760,233

Over Budget

\$476,233

BOE 4/7/22



VOTE ?

DW – Flooring I

Dear Creek MS, Falcon Bluffs MS,

Summit Ridge MS, Peiffer ES,

*Governor's Ranch ES, Mt Carbon ES,*

*Rooney Ranch ES*

AMD – PG Arnold - SCS (3 Gym Floors)



*Mt Carbon ES*



*Rooney Ranch ES*

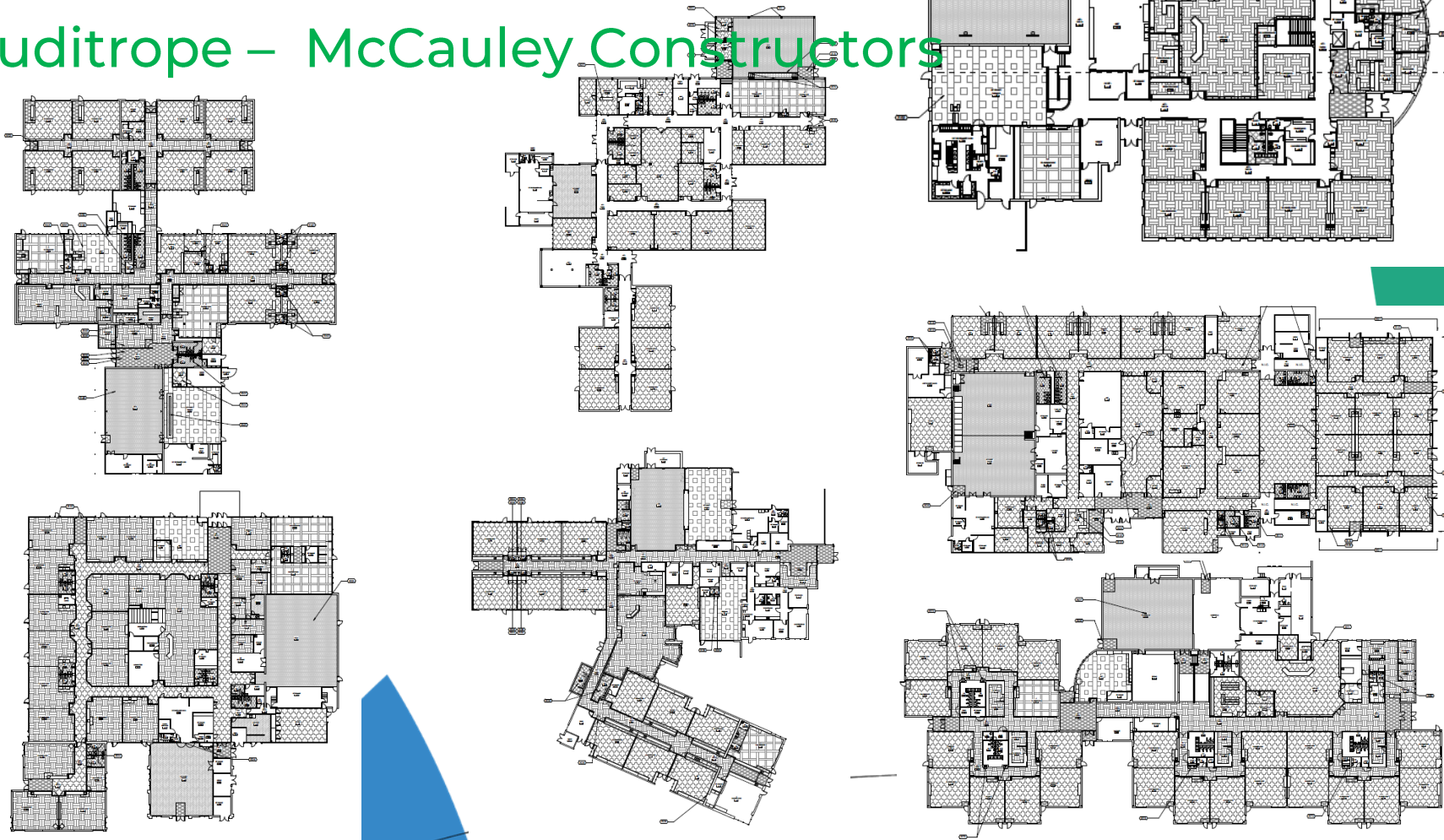


*Governor's Ranch ES*



DW – Flooring II  
Glennon Heights ES, Little ES, Parr ES  
Pennington ES, S Lakewood ES  
Swanson ES, Van Arsdale ES

studitrope – McCauley Constructors



## DW Playgrounds II 2022 Lime Green – T2

Confirm location of ADA HC ramp

**GENERAL NOTES**

1. VERIFY ALL DIMENSIONS AND LOCATIONS OF ALL EQUIPMENT AND SURFACING AREAS.
2. VERIFY ALL DIMENSIONS AND LOCATIONS OF ALL EQUIPMENT AND SURFACING AREAS.
3. VERIFY ALL DIMENSIONS AND LOCATIONS OF ALL EQUIPMENT AND SURFACING AREAS.
4. VERIFY ALL DIMENSIONS AND LOCATIONS OF ALL EQUIPMENT AND SURFACING AREAS.
5. VERIFY ALL DIMENSIONS AND LOCATIONS OF ALL EQUIPMENT AND SURFACING AREAS.
6. VERIFY ALL DIMENSIONS AND LOCATIONS OF ALL EQUIPMENT AND SURFACING AREAS.
7. VERIFY ALL DIMENSIONS AND LOCATIONS OF ALL EQUIPMENT AND SURFACING AREAS.
8. VERIFY ALL DIMENSIONS AND LOCATIONS OF ALL EQUIPMENT AND SURFACING AREAS.
9. VERIFY ALL DIMENSIONS AND LOCATIONS OF ALL EQUIPMENT AND SURFACING AREAS.
10. VERIFY ALL DIMENSIONS AND LOCATIONS OF ALL EQUIPMENT AND SURFACING AREAS.

**KEY NOTES**

1. VERIFY ALL DIMENSIONS AND LOCATIONS OF ALL EQUIPMENT AND SURFACING AREAS.
2. VERIFY ALL DIMENSIONS AND LOCATIONS OF ALL EQUIPMENT AND SURFACING AREAS.
3. VERIFY ALL DIMENSIONS AND LOCATIONS OF ALL EQUIPMENT AND SURFACING AREAS.
4. VERIFY ALL DIMENSIONS AND LOCATIONS OF ALL EQUIPMENT AND SURFACING AREAS.
5. VERIFY ALL DIMENSIONS AND LOCATIONS OF ALL EQUIPMENT AND SURFACING AREAS.
6. VERIFY ALL DIMENSIONS AND LOCATIONS OF ALL EQUIPMENT AND SURFACING AREAS.
7. VERIFY ALL DIMENSIONS AND LOCATIONS OF ALL EQUIPMENT AND SURFACING AREAS.
8. VERIFY ALL DIMENSIONS AND LOCATIONS OF ALL EQUIPMENT AND SURFACING AREAS.
9. VERIFY ALL DIMENSIONS AND LOCATIONS OF ALL EQUIPMENT AND SURFACING AREAS.
10. VERIFY ALL DIMENSIONS AND LOCATIONS OF ALL EQUIPMENT AND SURFACING AREAS.

**SYMBOL LEGEND**

JEFFCO PUBLIC SCHOOLS  
CAMPBELL ELEMENTARY  
PLAYGROUND IMPROVEMENTS  
1500 Oak Street, Aurora, CO 80002

PROJECT NO. 1500 OAK STREET, AURORA, CO 80002

DATE: 10/15/2022

DESIGNED BY: JEFFCO

CHECKED BY: JEFFCO

APPROVED BY: JEFFCO

MATERIALS PLAN  
L-201

Campbell ES

**GENERAL NOTES**

1. VERIFY ALL DIMENSIONS AND LOCATIONS OF ALL EQUIPMENT AND SURFACING AREAS.
2. VERIFY ALL DIMENSIONS AND LOCATIONS OF ALL EQUIPMENT AND SURFACING AREAS.
3. VERIFY ALL DIMENSIONS AND LOCATIONS OF ALL EQUIPMENT AND SURFACING AREAS.
4. VERIFY ALL DIMENSIONS AND LOCATIONS OF ALL EQUIPMENT AND SURFACING AREAS.
5. VERIFY ALL DIMENSIONS AND LOCATIONS OF ALL EQUIPMENT AND SURFACING AREAS.
6. VERIFY ALL DIMENSIONS AND LOCATIONS OF ALL EQUIPMENT AND SURFACING AREAS.
7. VERIFY ALL DIMENSIONS AND LOCATIONS OF ALL EQUIPMENT AND SURFACING AREAS.
8. VERIFY ALL DIMENSIONS AND LOCATIONS OF ALL EQUIPMENT AND SURFACING AREAS.
9. VERIFY ALL DIMENSIONS AND LOCATIONS OF ALL EQUIPMENT AND SURFACING AREAS.
10. VERIFY ALL DIMENSIONS AND LOCATIONS OF ALL EQUIPMENT AND SURFACING AREAS.

**KEY NOTES**

1. VERIFY ALL DIMENSIONS AND LOCATIONS OF ALL EQUIPMENT AND SURFACING AREAS.
2. VERIFY ALL DIMENSIONS AND LOCATIONS OF ALL EQUIPMENT AND SURFACING AREAS.
3. VERIFY ALL DIMENSIONS AND LOCATIONS OF ALL EQUIPMENT AND SURFACING AREAS.
4. VERIFY ALL DIMENSIONS AND LOCATIONS OF ALL EQUIPMENT AND SURFACING AREAS.
5. VERIFY ALL DIMENSIONS AND LOCATIONS OF ALL EQUIPMENT AND SURFACING AREAS.
6. VERIFY ALL DIMENSIONS AND LOCATIONS OF ALL EQUIPMENT AND SURFACING AREAS.
7. VERIFY ALL DIMENSIONS AND LOCATIONS OF ALL EQUIPMENT AND SURFACING AREAS.
8. VERIFY ALL DIMENSIONS AND LOCATIONS OF ALL EQUIPMENT AND SURFACING AREAS.
9. VERIFY ALL DIMENSIONS AND LOCATIONS OF ALL EQUIPMENT AND SURFACING AREAS.
10. VERIFY ALL DIMENSIONS AND LOCATIONS OF ALL EQUIPMENT AND SURFACING AREAS.

**SYMBOL LEGEND**

JEFFCO PUBLIC SCHOOLS  
FAIRMOUNT ELEMENTARY  
PLAYGROUND IMPROVEMENTS  
1500 W. 50TH AVE., GOLDEN, CO 80401

PROJECT NO. 1500 W. 50TH AVE., GOLDEN, CO 80401

DATE: 10/15/2022

DESIGNED BY: JEFFCO

CHECKED BY: JEFFCO

APPROVED BY: JEFFCO

MATERIALS PLAN  
L-201

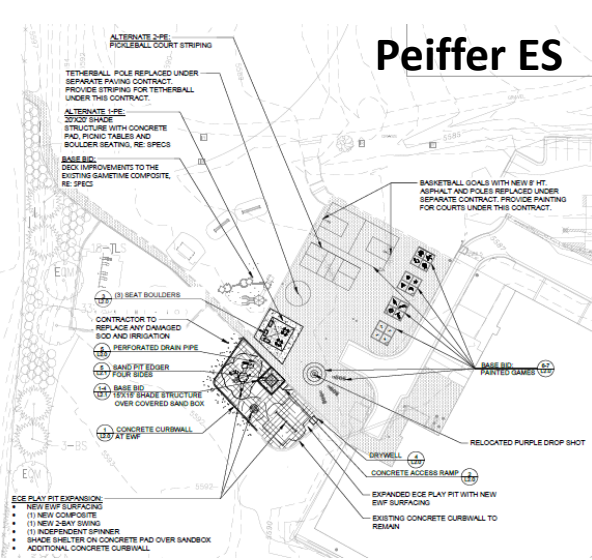
Fairmount ES



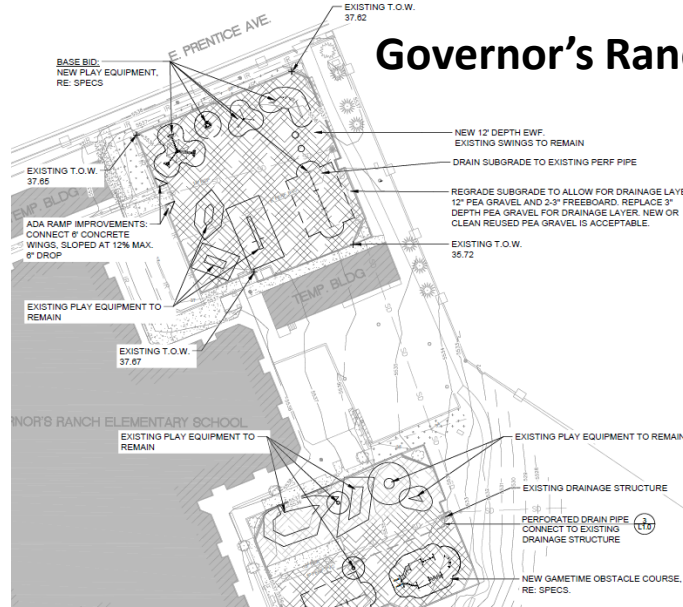
# DW Playgrounds I 2022 Design Concepts – TBD

Construction Documents  
Bids 3/17

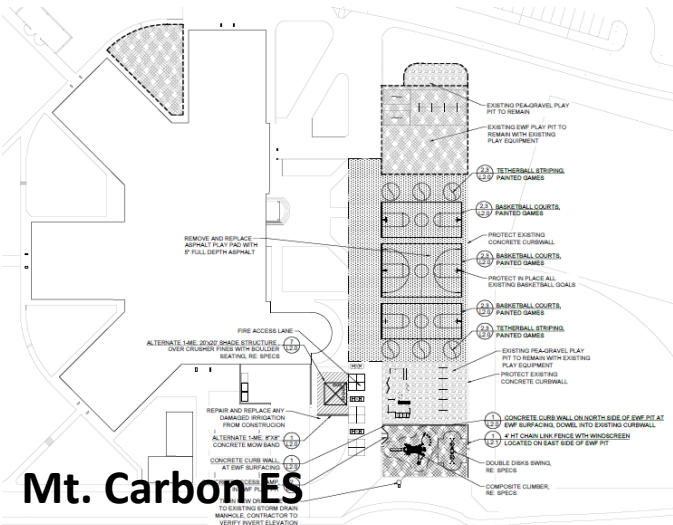
## Peiffer ES



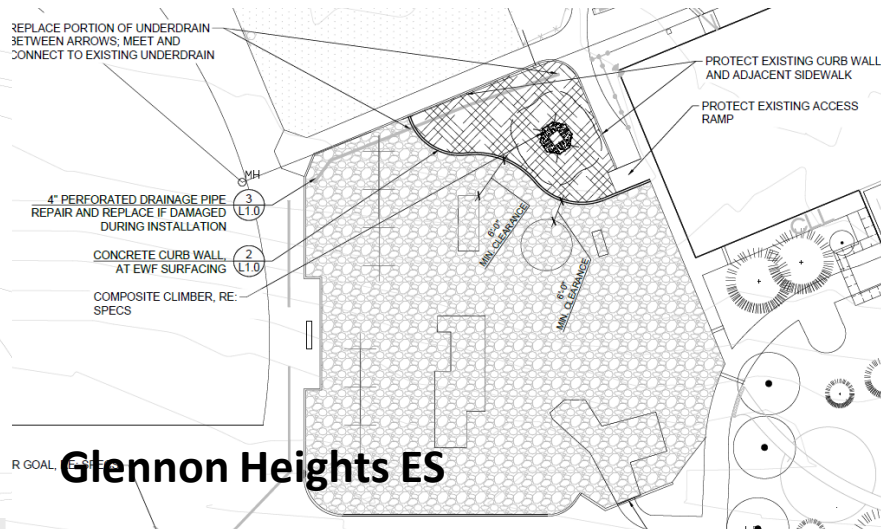
## Governor's Ranch ES



## Mt. Carbon ES



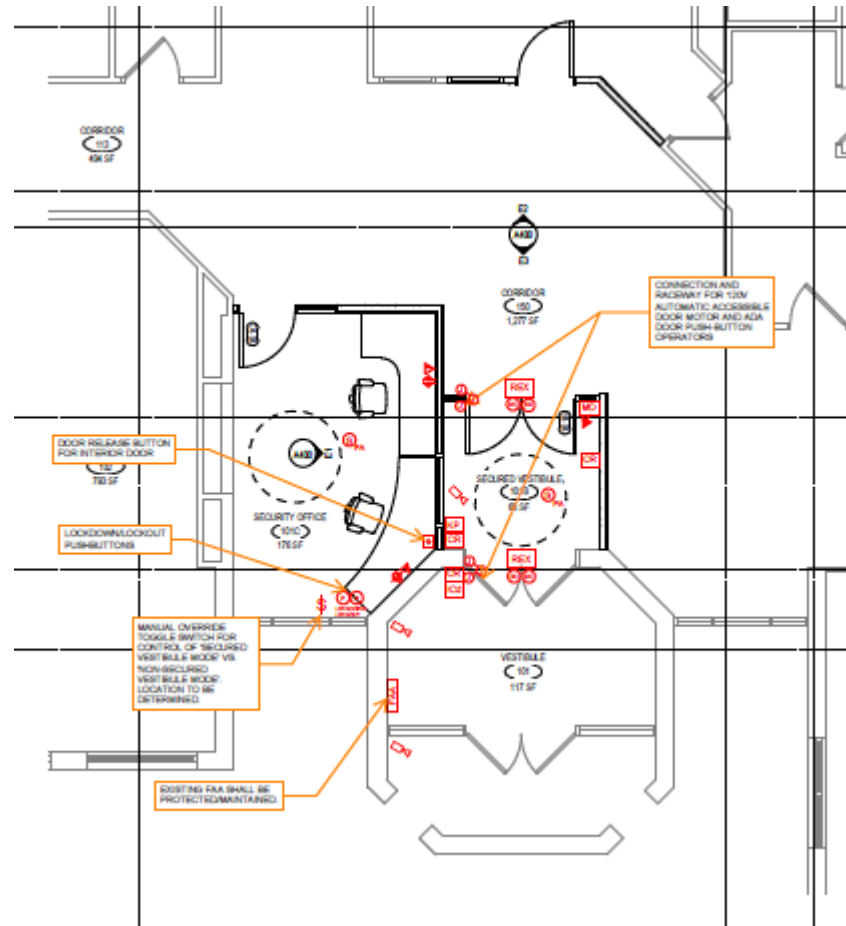
## Glennon Heights ES



# Efficiency Future Ready Bergen Valley ES

Construction  
Documents  
Bids 3/17/22

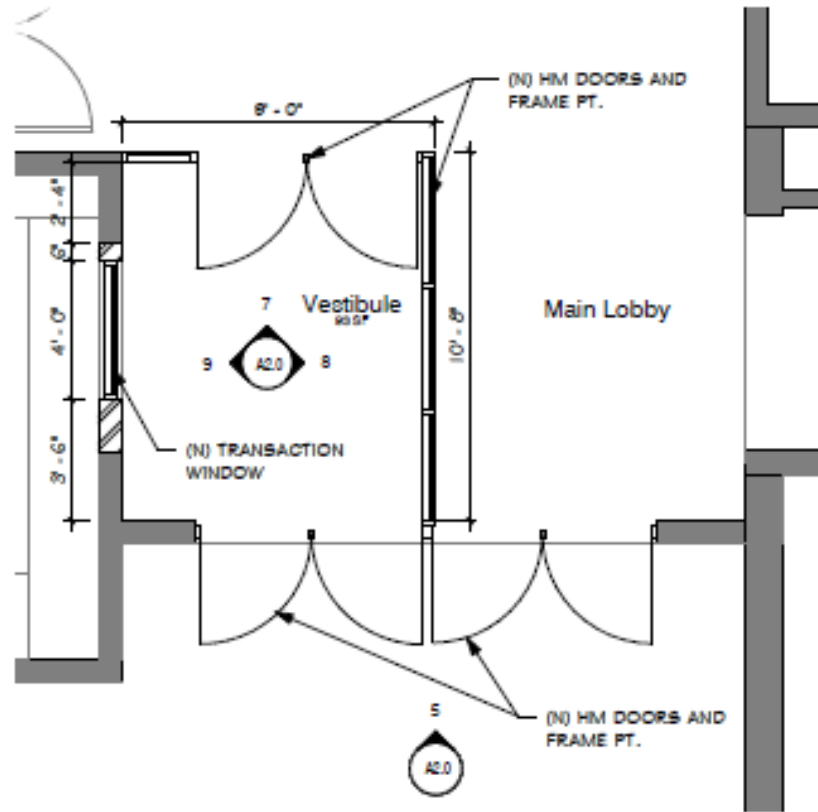
EUA – TBD



# Efficiency Future Ready Slater ES

Construction  
Documents  
Bids 3/17/22

Eidos – TBD



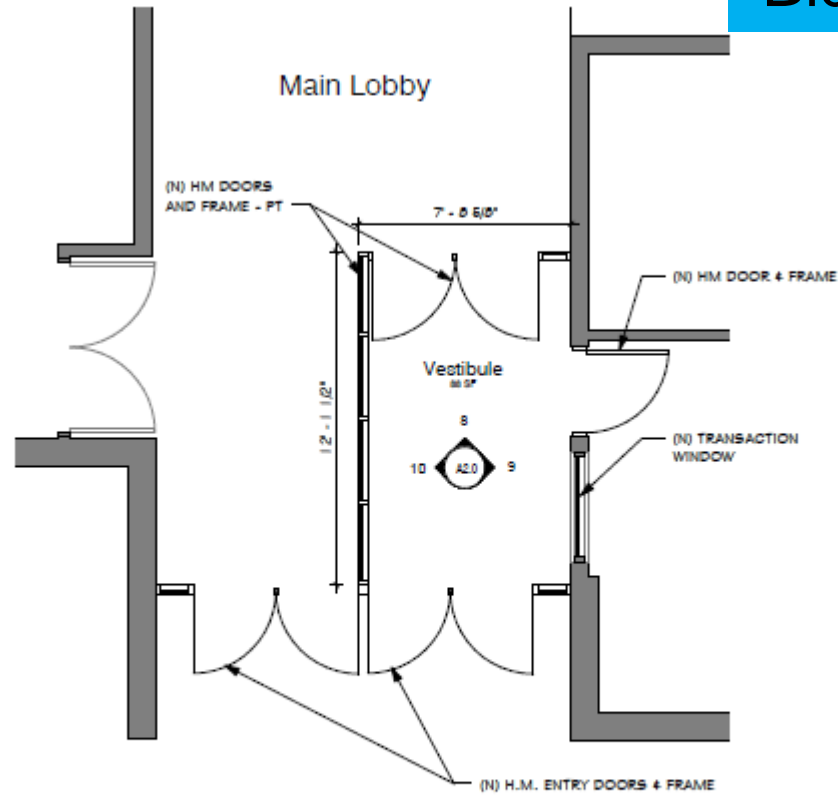
## 4. Enlarged Plan

1/4" = 1'-0"

# Efficiency Future Ready Wilmore Davis ES

Construction  
Documents  
Bids 3/17/22

Eidos – TBD



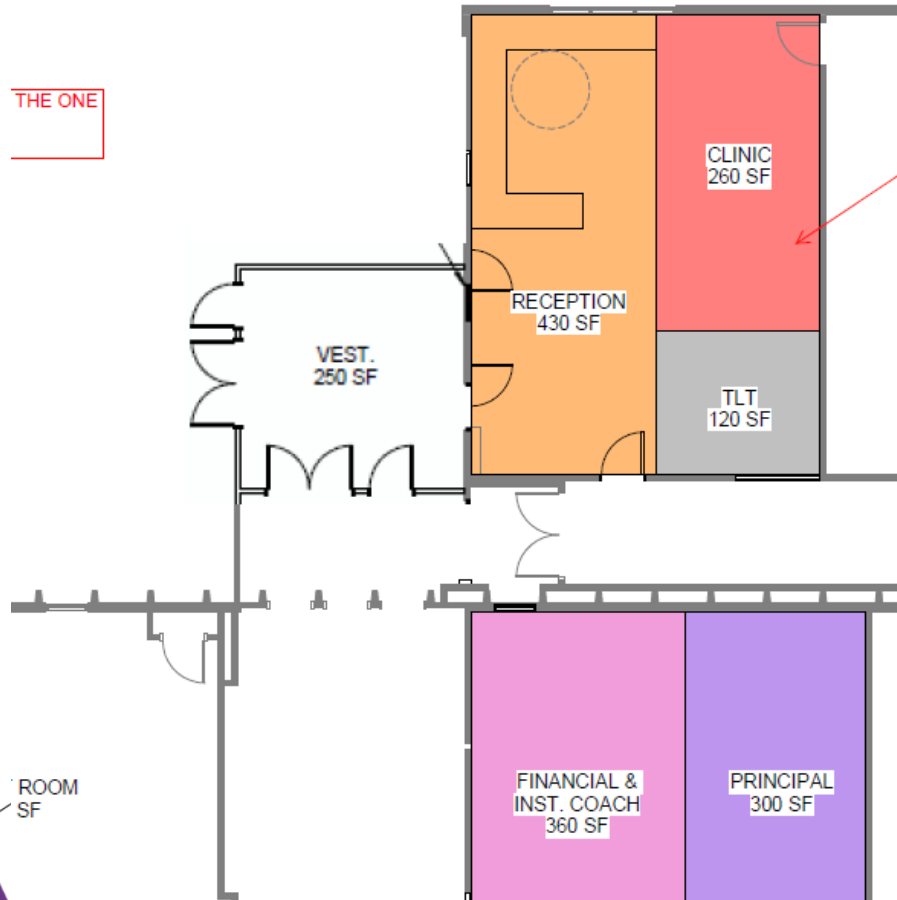
## 1. Enlarged Plan

1/4" = 1'-0"

# Efficiency Future Ready Westgate ES

Construction  
Documents  
Bids 3/22/22

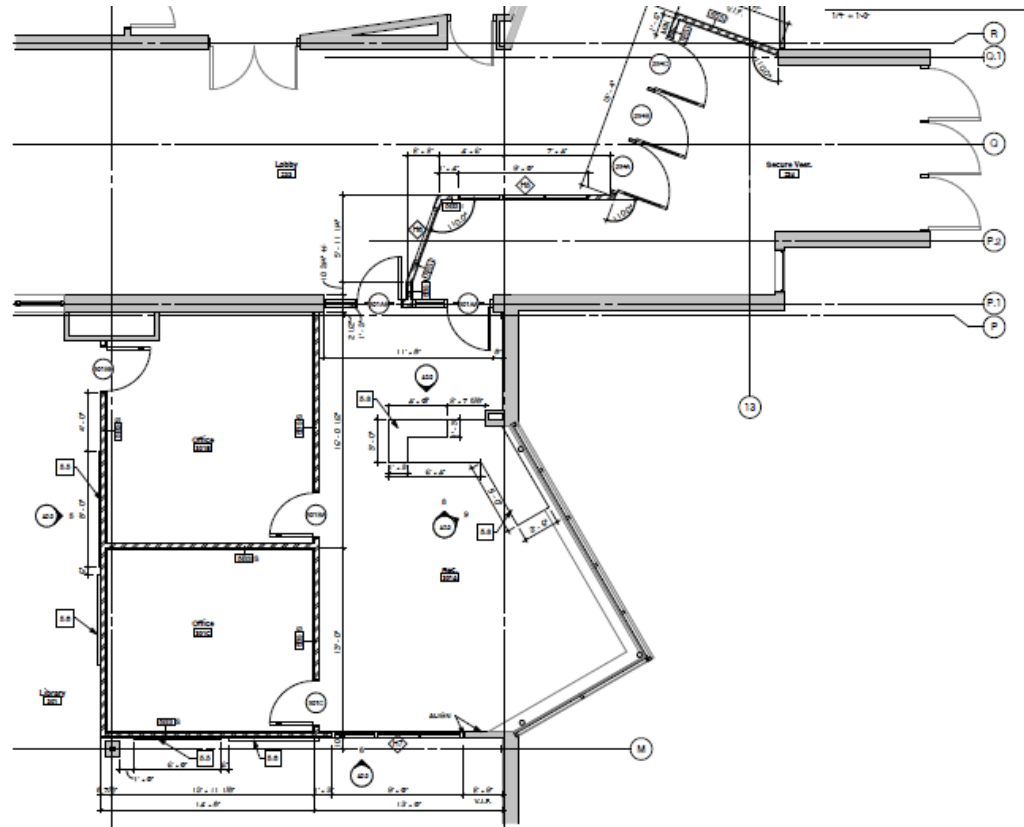
Treanor HL- TBD



# Efficiency Future Ready North Arvada MS

Construction  
Documents  
Bids 3/22/22

Eidos – TBD



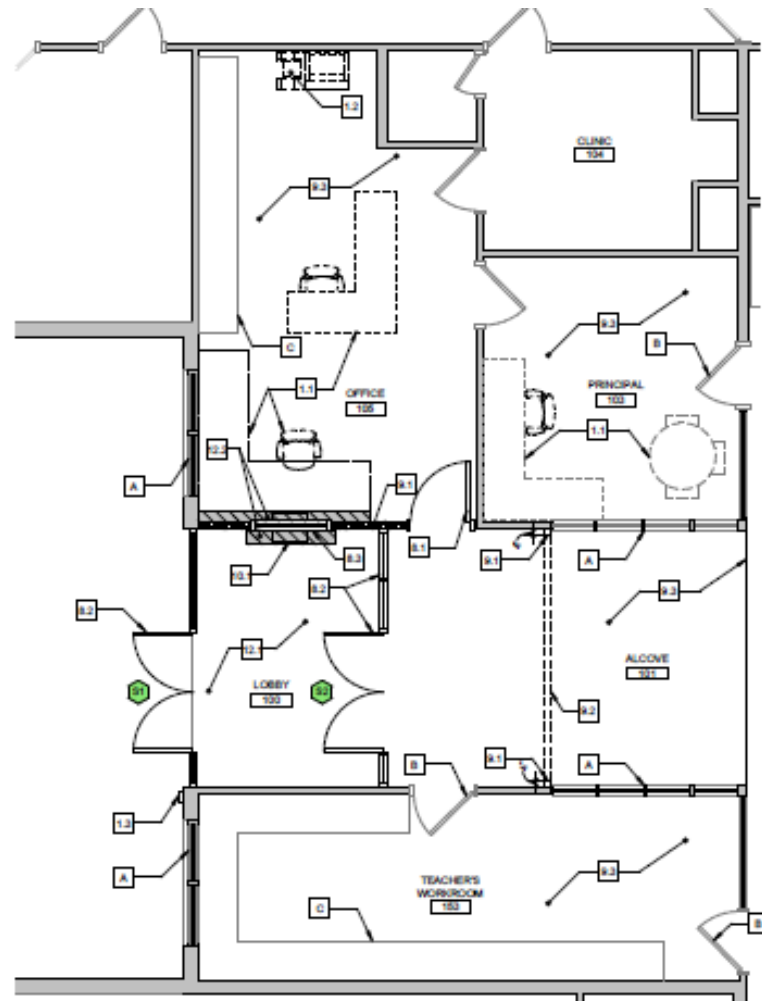
4. Secure Vestibule and Office Enlarged Plan  
1/8" = 1'-0"



# Efficiency Future Ready Peck ES

Construction  
Documents  
Bids 3/23/22

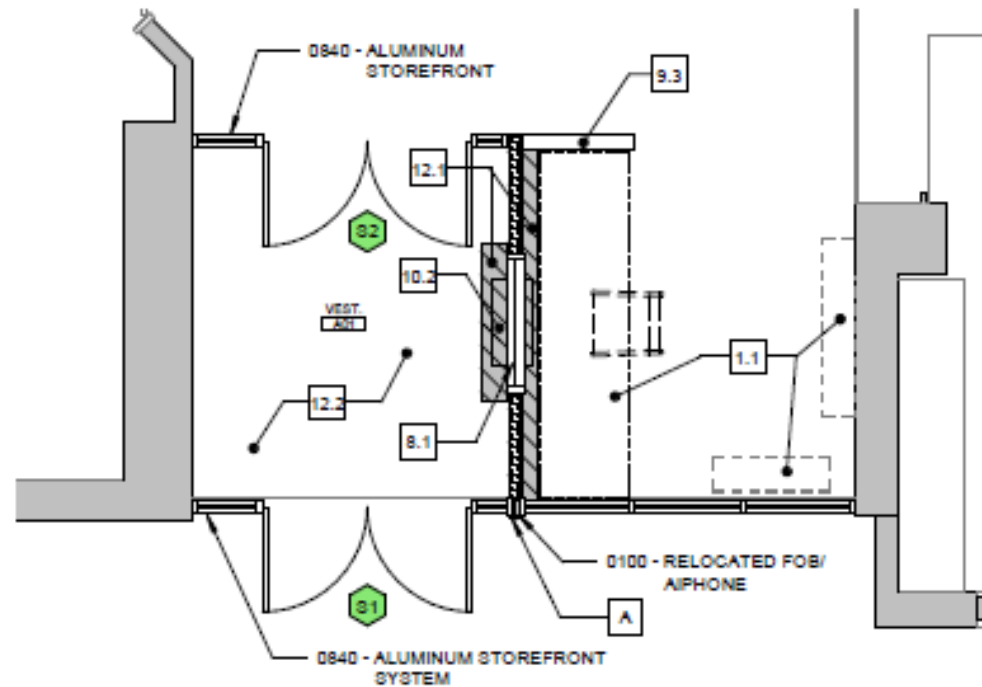
Larson Incitti – TBD



# Efficiency Future Ready Secret ES

Construction  
Documents  
Bids 3/23/22

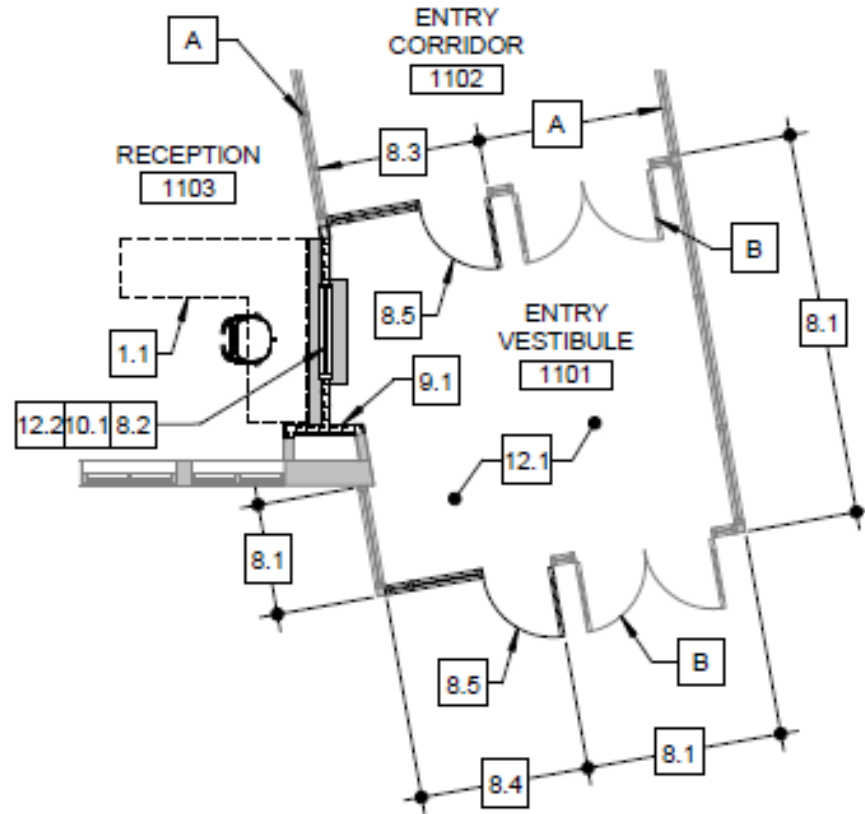
Larson Incitti – TBD



# Efficiency Future Ready Creighton MS

Construction  
Documents  
Bids 3/23/22

Larson Incitti – TBD



# DW LED 2022

## Ackerman – CMGC McKinstry

### Design Development



1. Lawrence ES
2. Brady
3. Bradford North
4. Bradford South
5. Ute Meadows ES
6. Leawood ES
7. Normandy ES
8. Rooney Ranch ES
9. Creighton MS
10. Moore MS
11. Weber ES
12. Meiklejohn
13. West Woods
14. Chatfield HS
15. Dakota Ridge HS

# Security Glass Installation 11 - Schools

|               |                 |
|---------------|-----------------|
| Swanson       | Glennon Heights |
| Arvada West   | S Lakewood      |
| Canpbell      | Little          |
| Fairmount     | Parr            |
| Bear Creek K8 | Pennington      |
| Summit Ridge  |                 |



# Efficiency Future Ready Wheat Ridge HS

Design  
Development

Eidos – TBD





# Efficiency Future Ready Wheat Ridge HS

## Design Development

Commons:





# Next Meeting 4/21/22